

**MICHIGAN STATE**  

---

**UNIVERSITY**

**Project Plan Presentation**  
**Organization Efficiencies Utilizing Wifi**  
**Locationing**  
**The Capstone Experience**

**Team Meijer**

Josh Erno

Naveen Kumanan

Grace Mora

Matt Norris

Haichen Sun

Marv Zurek III

Department of Computer Science and Engineering  
Michigan State University

Spring 2023



*From Students...*  
*...to Professionals*

# Project Sponsor Overview

- Regional Retailer
- Founded in 1934 in Greenville, MI
- Over 265 stores in 6 Midwest states



# Project Functional Specifications

---

- Improve the Customer Experience
- By Adding Smartphone Payment and
- Redirecting Resources to Busy Areas
- Using Real Time Store Traffic Data



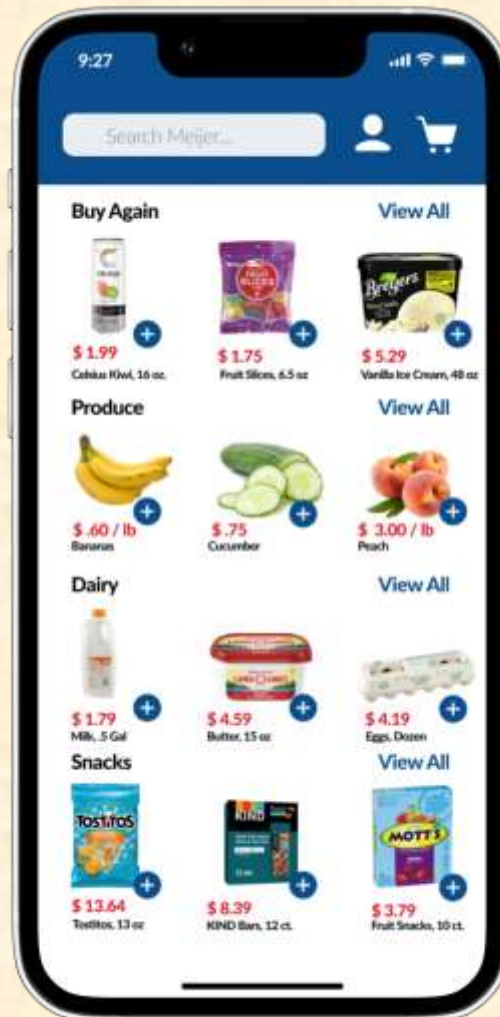
# Project Design Specifications

---

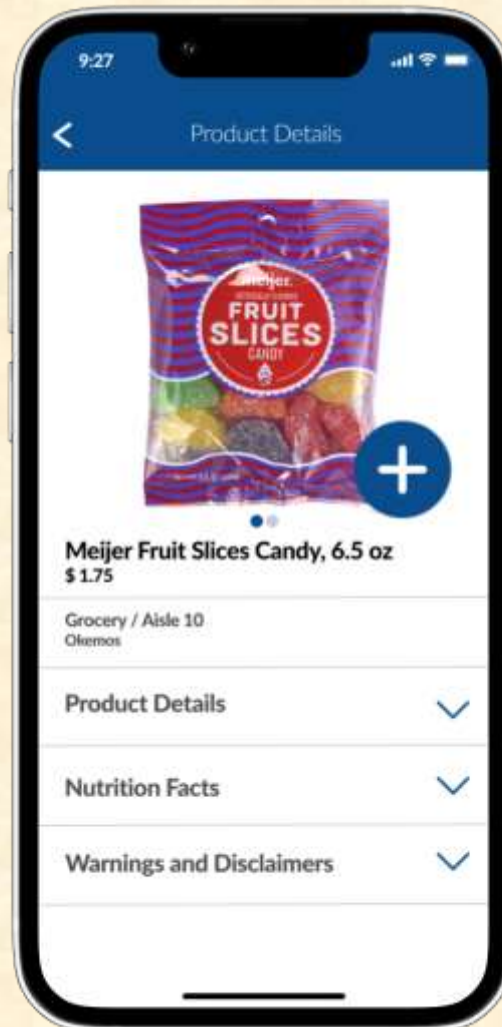
- Enhanced Shop & Scan Functionality by paying directly from phone
- Validation of Customers Credibility
- Showcase of Customer Shopping/Payment metrics



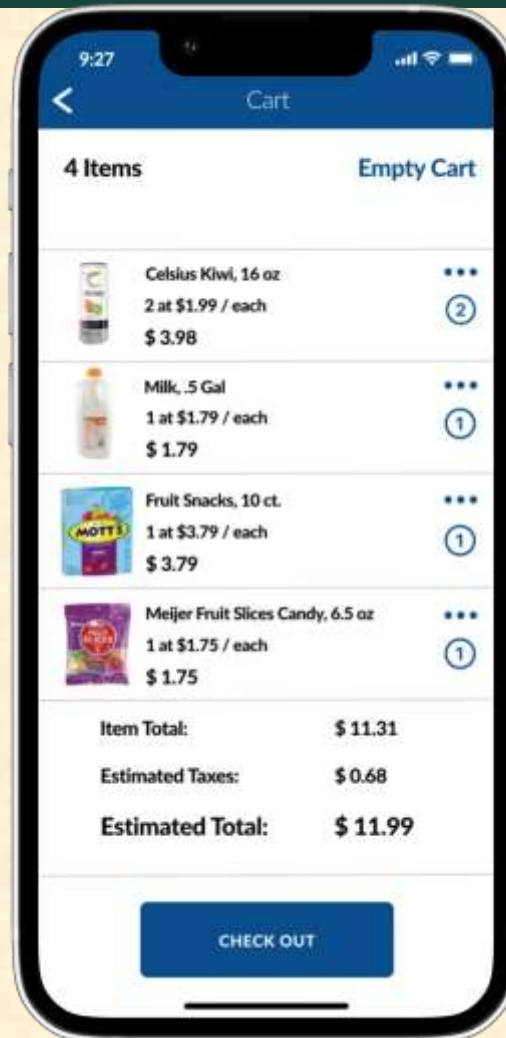
# Screen Mockup: Home Screen



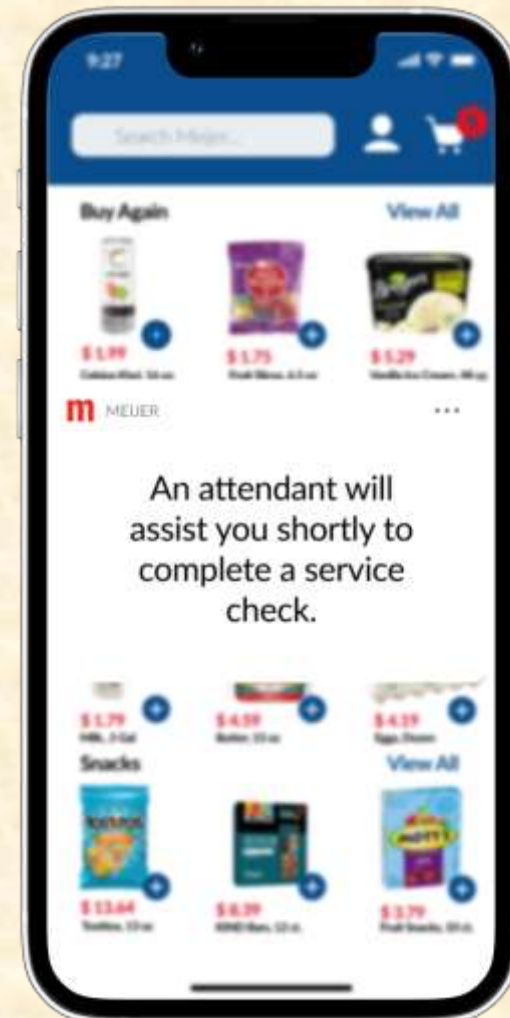
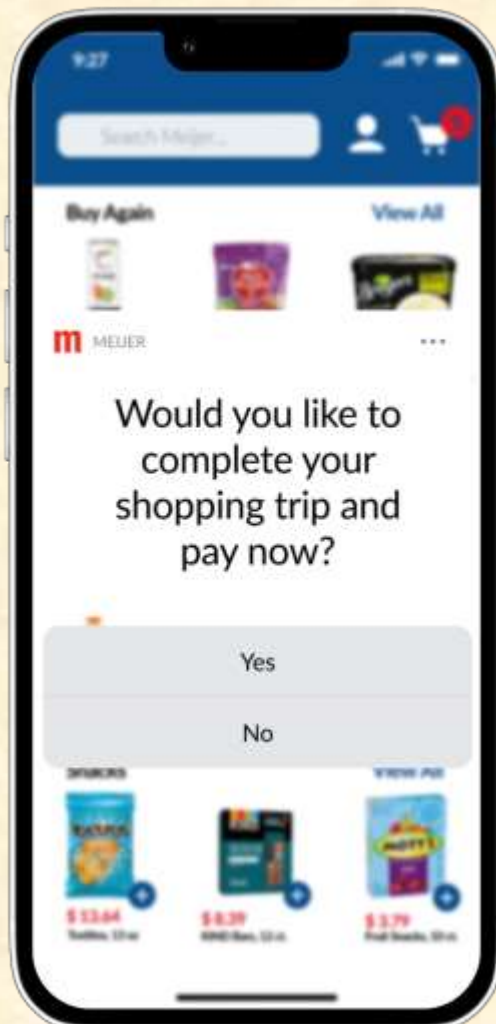
# Screen Mockup: Item Screen



# Screen Mockup: Cart Screen

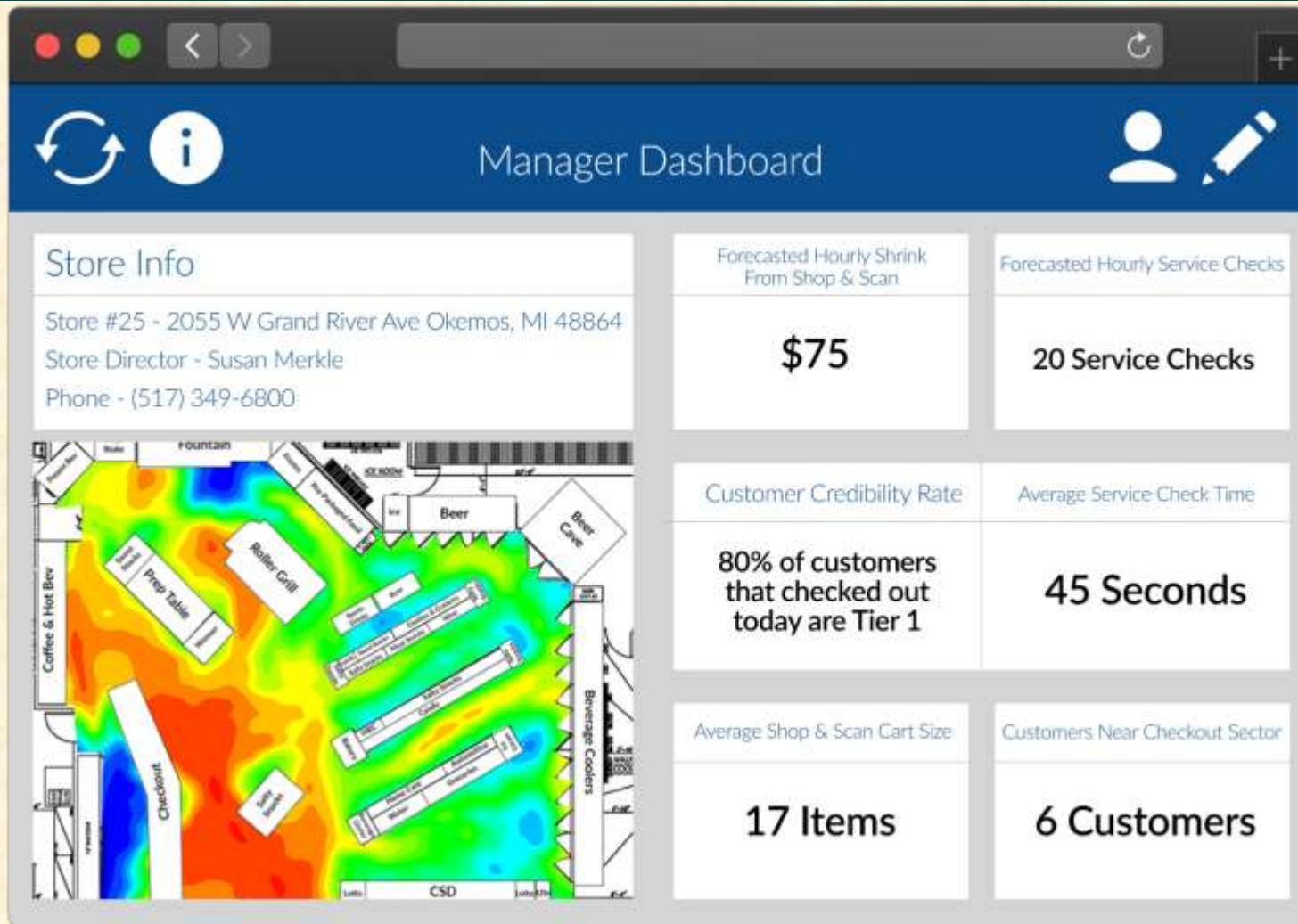


# Screen Mockup: Checkout Notification Screen

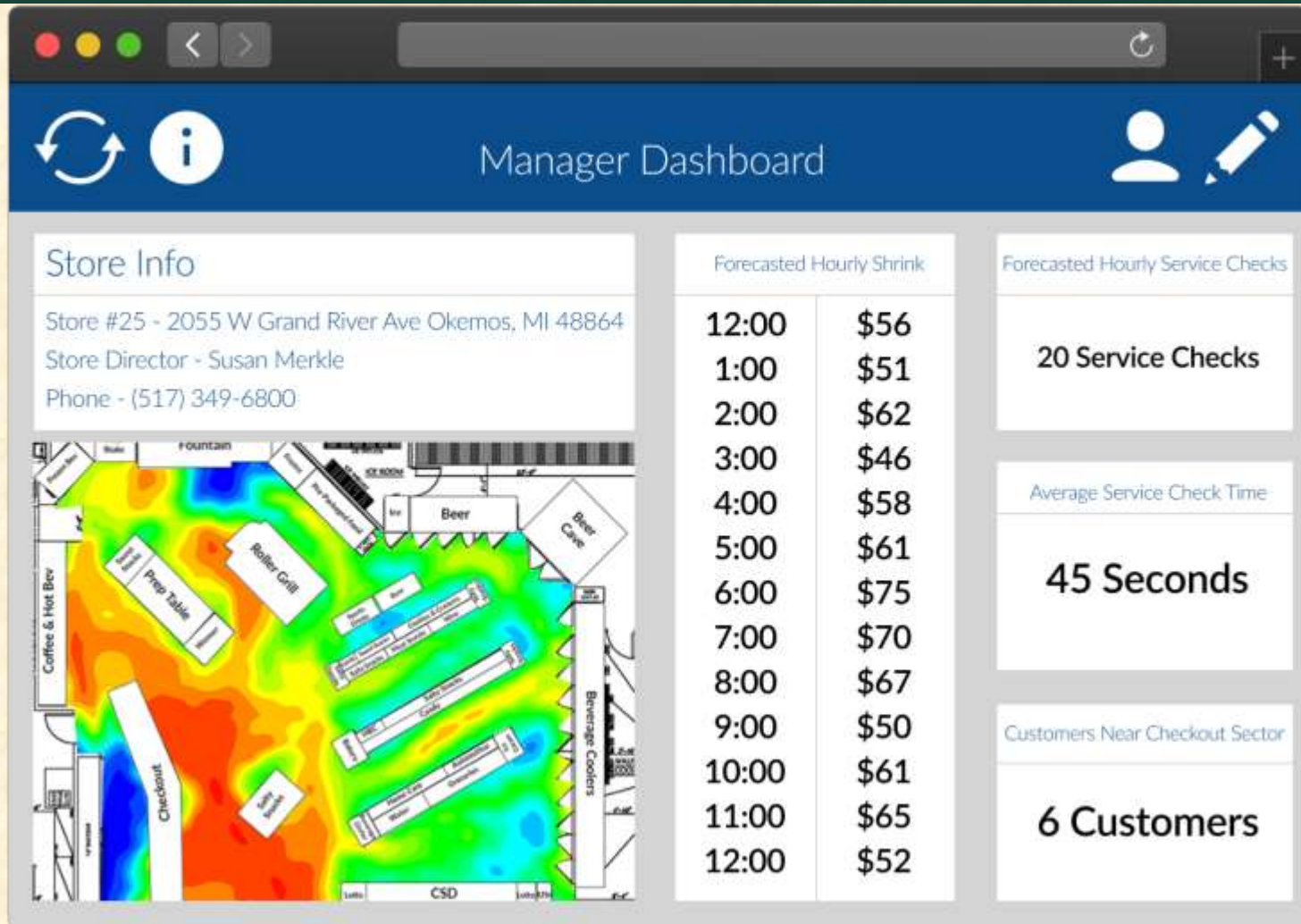




# Screen Mockup: Dashboard Screen #1



# Screen Mockup: Dashboard Screen #2

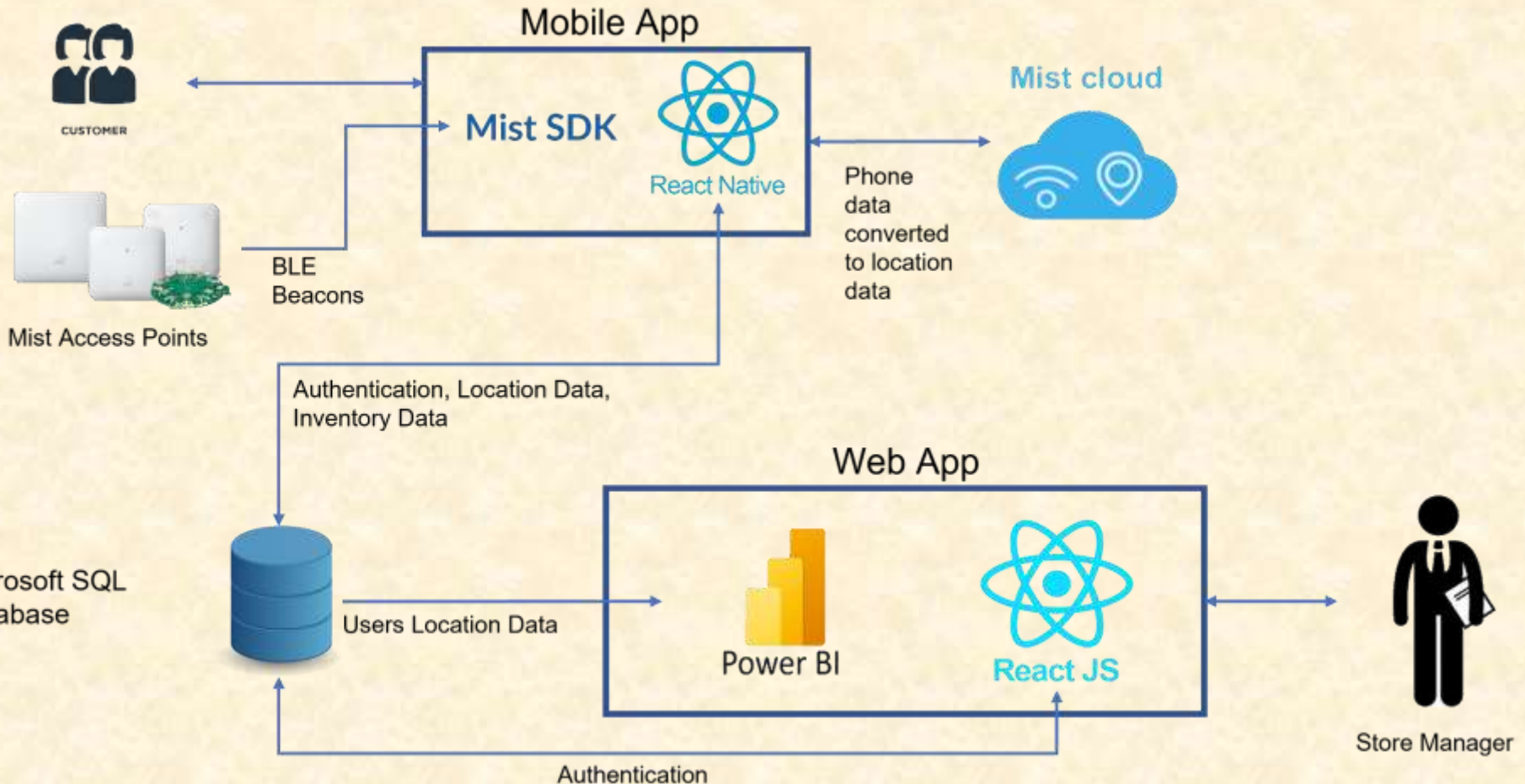


# Project Technical Specifications

- Use react-native to build the basic structure of the app. Target customers by uploading data from Mist-access-point to Mist-cloud.
- Through the data stored in Microsoft-SQL, users can directly use the app to scan and record the price of the product without queuing up to re-scan.
- Through the positioning of Mist-access-point, customers can directly use the app to pay bills in designated areas without queuing for payment.
- Administrators can monitor the region through dashboards generated by Power-BI and ReactJS.



# Project System Architecture



# Project System Components

- Hardware Platforms
  - Mist Juniper Access Points
- Software Platforms / Technologies
  - Web Application
    - React JS
    - React Router
    - Microsoft SQL Server
    - Microsoft Power BI
  - Phone Application
    - React Native
    - React Navigation
    - Mist Wi-Fi
    - Microsoft SQL Server



# Project Risks

- Risk 1
  - Integrating Mist-SDK into React Native App
  - Utilizing Android and iOS documentation, consulting with Juniper-Mist staff
- Risk 2
  - Obtaining, using and updating real-time data on PowerBI dashboard
  - Continue PowerBI research, streamline dataset using Azure Stream
- Risk 3
  - Translating Customer data from the mobile app to the web app
  - Plan: mobile app -> Azure SQL -> PowerBI -> web app
- Risk 4
  - Utilizing customer credibility data in an efficient and user-friendly way
  - Maximize positive customer experience for customer retention while minimizing theft, using customer data and collective experiences



# Questions?

---

?

?

?

?

?

?

?

?

?

