

MICHIGAN STATE  
UNIVERSITY

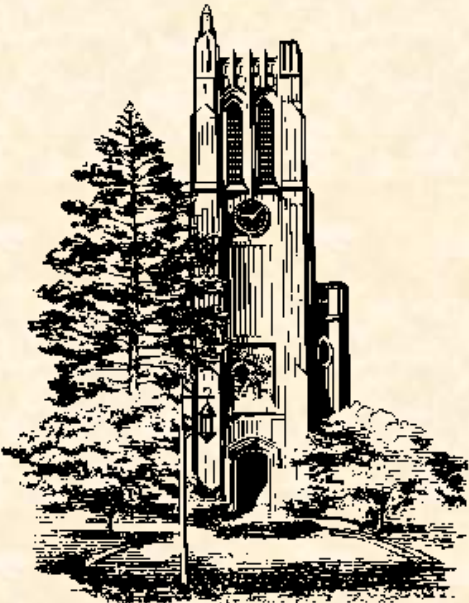
# Beta Demonstration Camera Control Appliance

Team Raytheon  
CSE 498, Collaborative Design

Austin Gregory  
Phillip Studans  
Scott Bishop  
Thomas Parker

Department of Computer Science and Engineering  
Michigan State University

Spring 2010





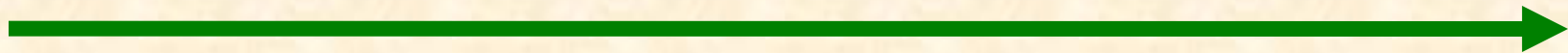
# Project Overview

---

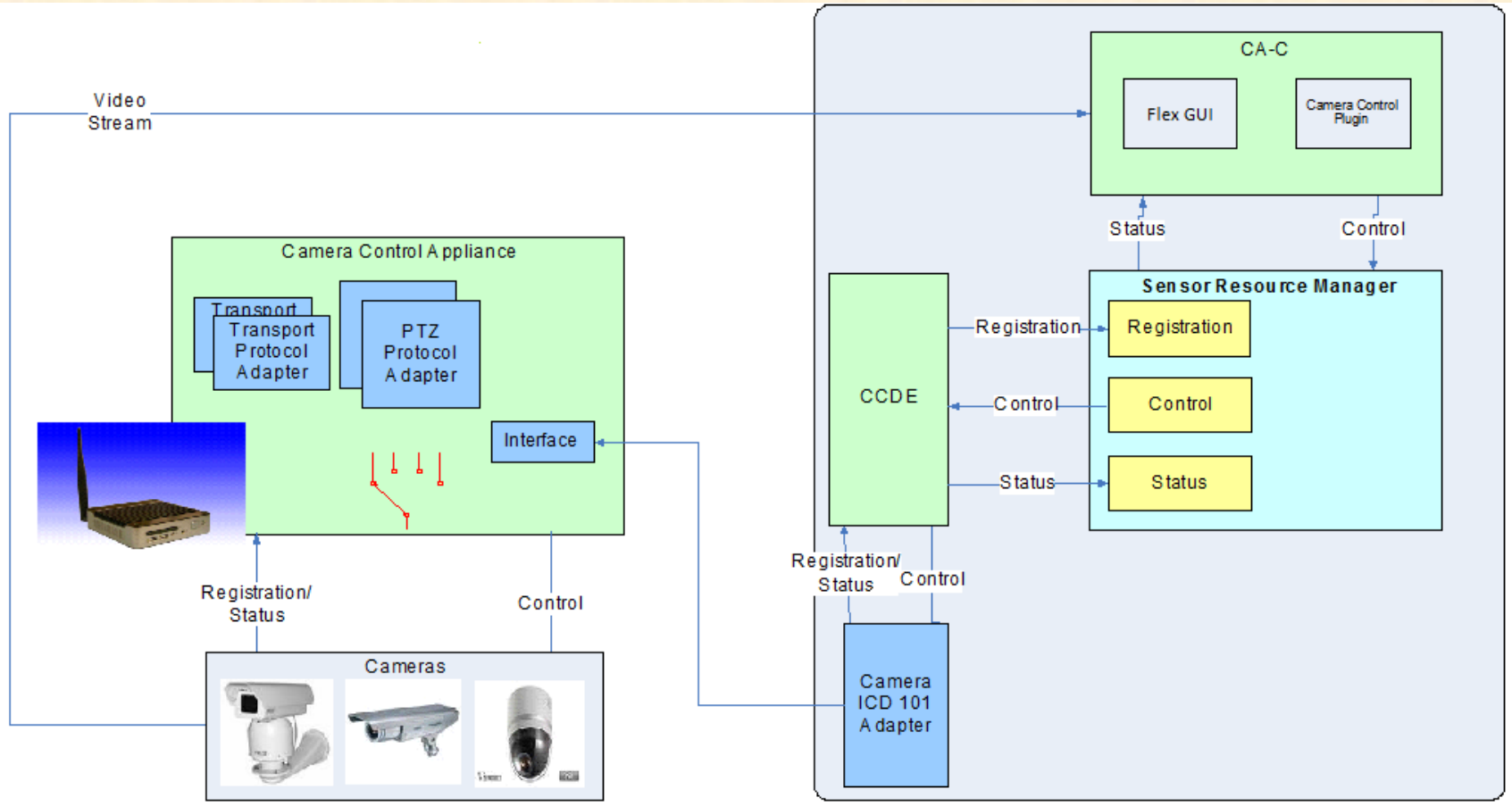
- Camera Control Appliance
  - ICD-101A → different camera protocol
  - Communicate with Sensor Resource Manager (SRM)
- Flex GUI
  - Create commands from users
  - Commands → SRM
  - Stream video
- Command Assurance Plugin
  - Subscribe to changes from SRM
  - Update objects in Command Assurance



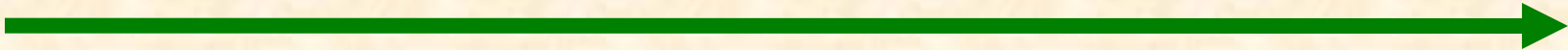
# Architecture



Team Raytheon



# Screen Shot



Command Assurance - Civil

File Civil/C2 Window Help

Common Operating Picture

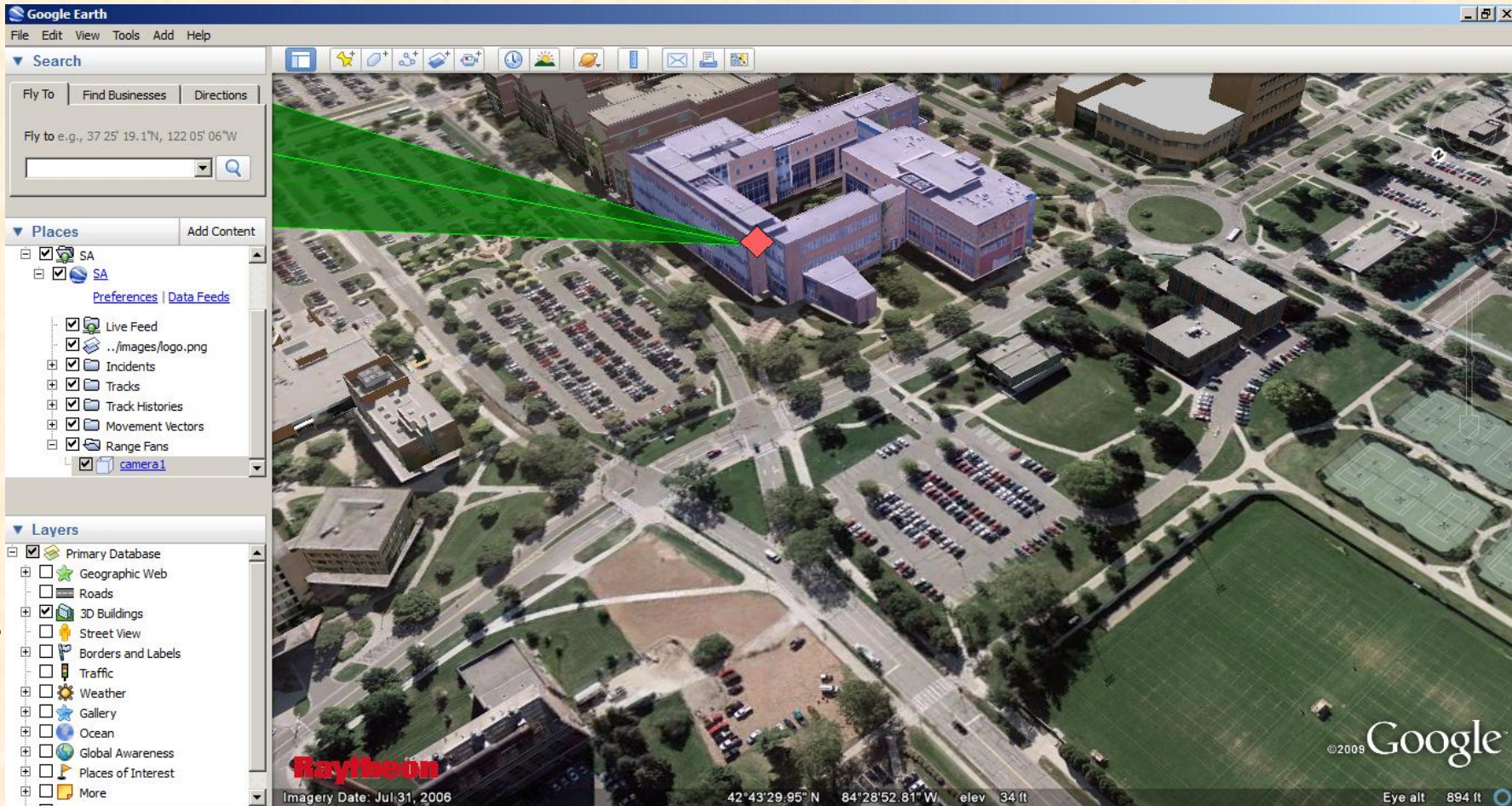
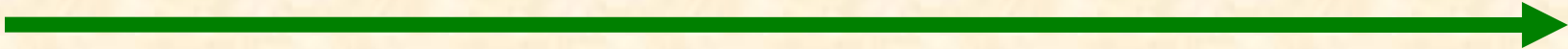
- Incident (30)
- Sensor Sector (1)

Data Feed Manager Console XML Data Viewer

Feed Name	Status	Is Running	TX Msgs	RX Msgs
DIS	Running	true	0	0
CCA Plugin	Running	true	0	0
FAA	Connecting	true	0	0
Indianapolis 911	Running	true	0	30



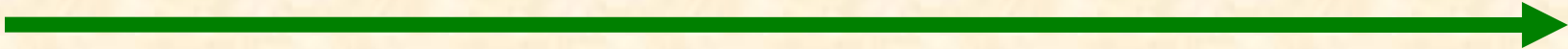
# Screen Shot



Team Raytheon



# Screen Shot



The screenshot displays the Google Earth application window. The main map shows an aerial view of a university campus with a red sensor icon on a building. A green sensor beam is visible. A 'Sensor' control panel is overlaid on the map, showing the following details:

Sensor	
Name	Stalker 1
Type	Axis 215 PTZ
Azimuth	214°
Position	34°, -101°, 1x
Latitude	42.724944°
Longitude	-84.481336°
Altitude	34 ft
Last Command	Stop

Below the sensor details is a 'PTZ Control' panel with buttons for: UpLeft, Up, UpRight, ZoomIn, Left, Stop, Right, ZoomOut, DownLeft, Down, DownRight.

To the right of the sensor panel is a 'Video Feed' window showing a close-up of a Mountain Dew bottle on a desk.

The Google Earth interface includes a search bar, a 'Places' list with 'SA' and 'camera1' selected, and a 'Layers' list with 'Primary Database' and 'Geographic Web' checked. The bottom left corner of the map area has a 'Raytheon' logo and the text 'Imagery Date: Jul 31, 2006'.

Team Raytheon