

MICHIGAN STATE  
UNIVERSITY

# Alpha Demonstration Camera Control Appliance (CCA)

Team Raytheon  
CSE 498, Collaborative Design

Austin Gregory  
Phillip Studans  
Scott Bishop  
Thomas Parker

Department of Computer Science and Engineering  
Michigan State University

Spring 2010



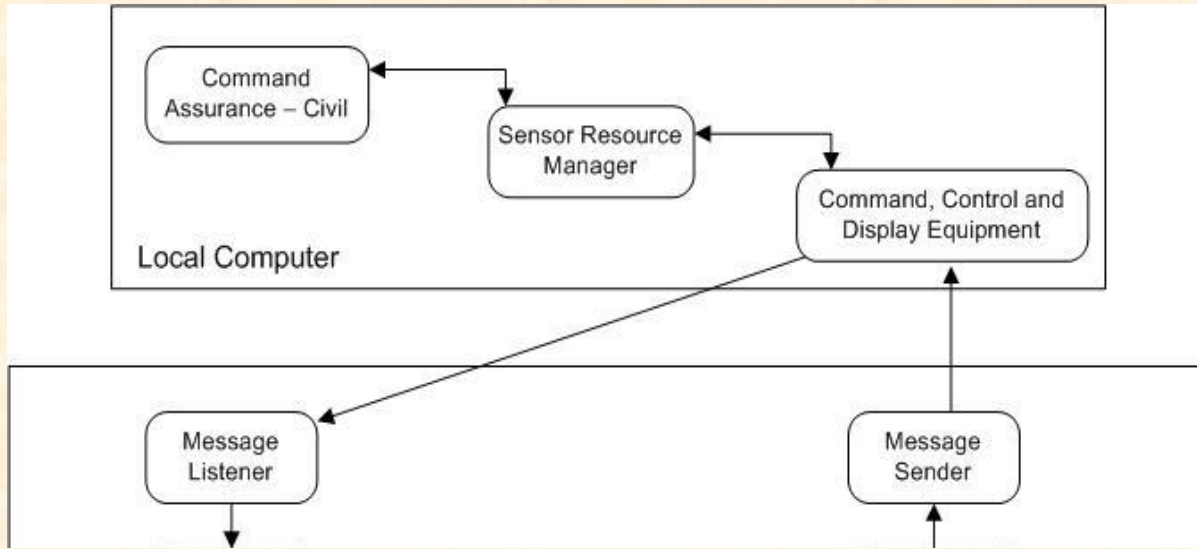
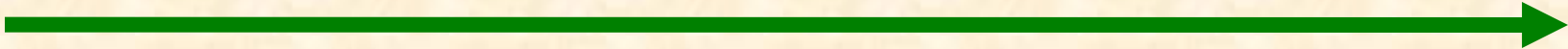


# Project Overview

- Command Assurance – Civil (CA-C)
  - User interface, overlays objects on Google Earth
- Sensor Resource Manager (SRM)
  - ‘Brains’ of the operation
- Command, Control, and Display Equipment (CCDE)
  - Message sender and listener for SRM
- Camera Control Appliance (CCA)
  - Translates messages, threaded camera control
  - What we make!

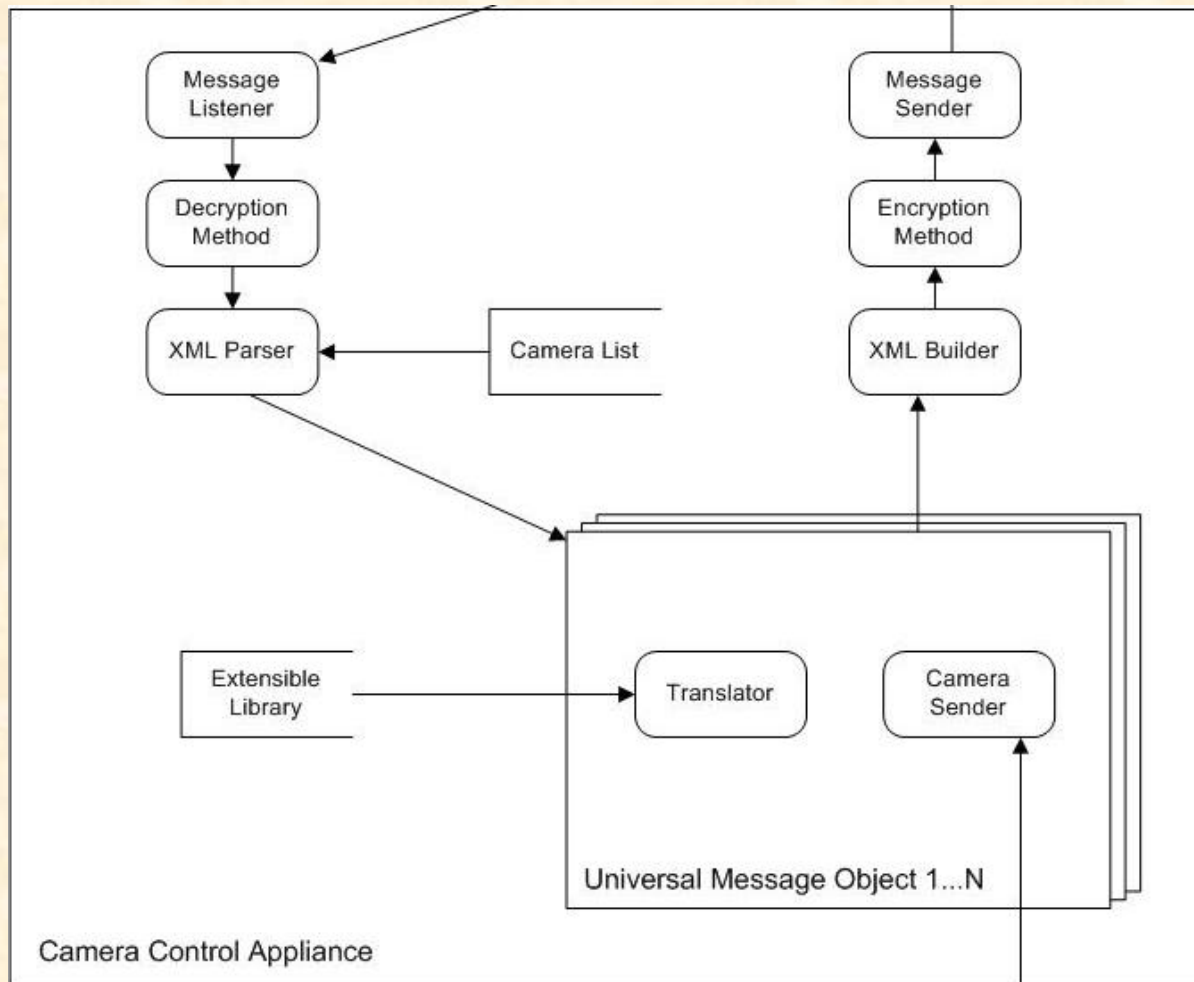


# Architecture Illustrated





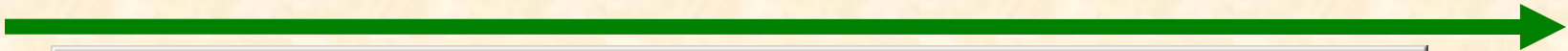
# Architecture Illustrated



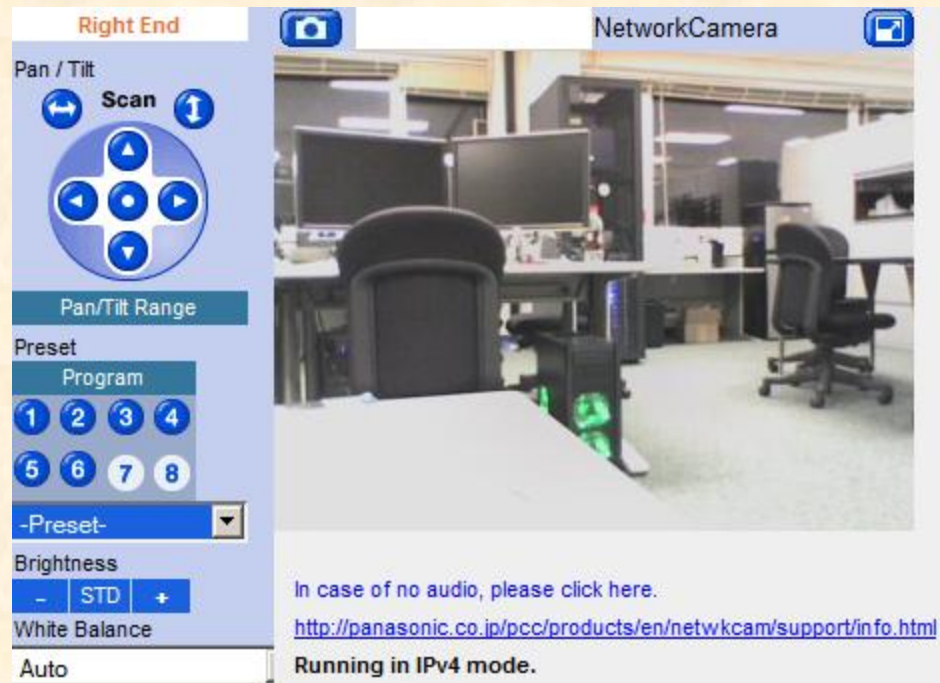
Team Raytheon



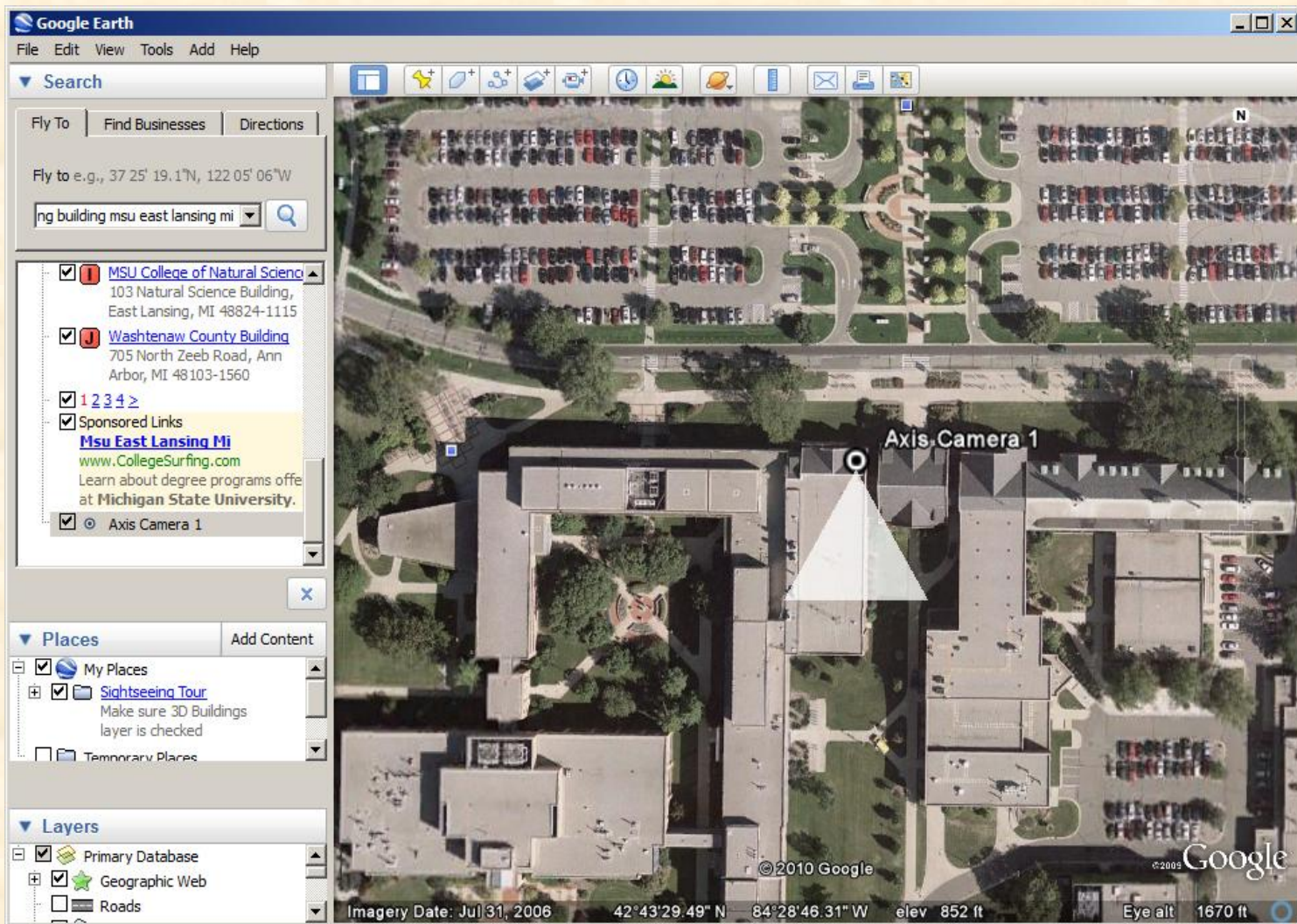
# Screen Shot



## Controls and Visuals



# Screen Shot



Team Raytheon



# What's left to do?

- Embed Camera Controller into Google Earth
  - Implemented through CA-C
  - Design GUI
- ICD-101A
  - Parser
  - Translator
- Extend Functionality
  - Extensible Library
- Develop SRM Plugin for CA-C
- Testing