



Alpha Presentation

Team Member Mapping Application

The Capstone Experience

Team Rocket Companies

Sam Walls

Justin Vesche

Mark Kim

Edwin Flores-Cardoso

John Samsell



*From Students...
...to Professionals*

Department of Computer Science and Engineering
Michigan State University

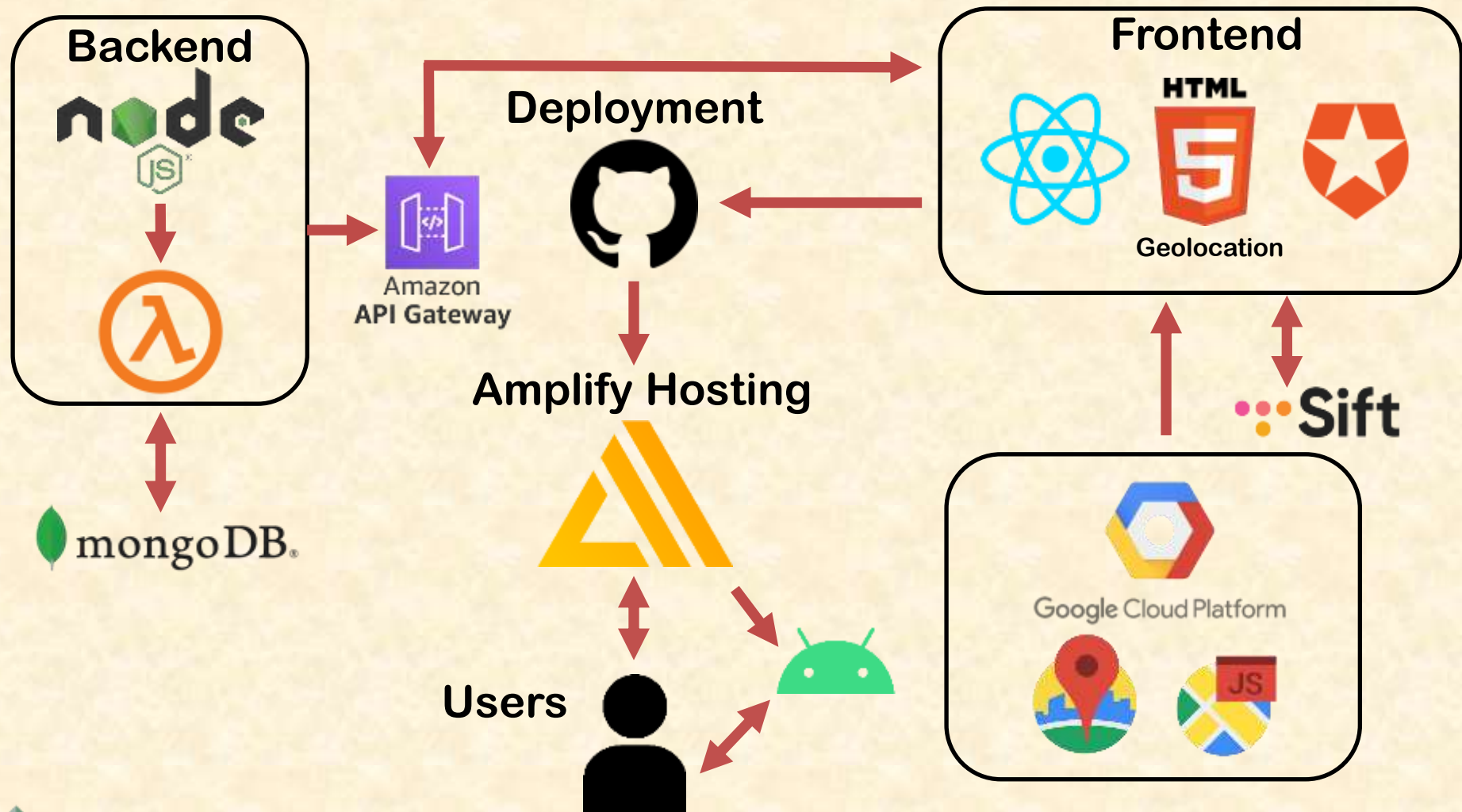
Spring 2022

Project Overview

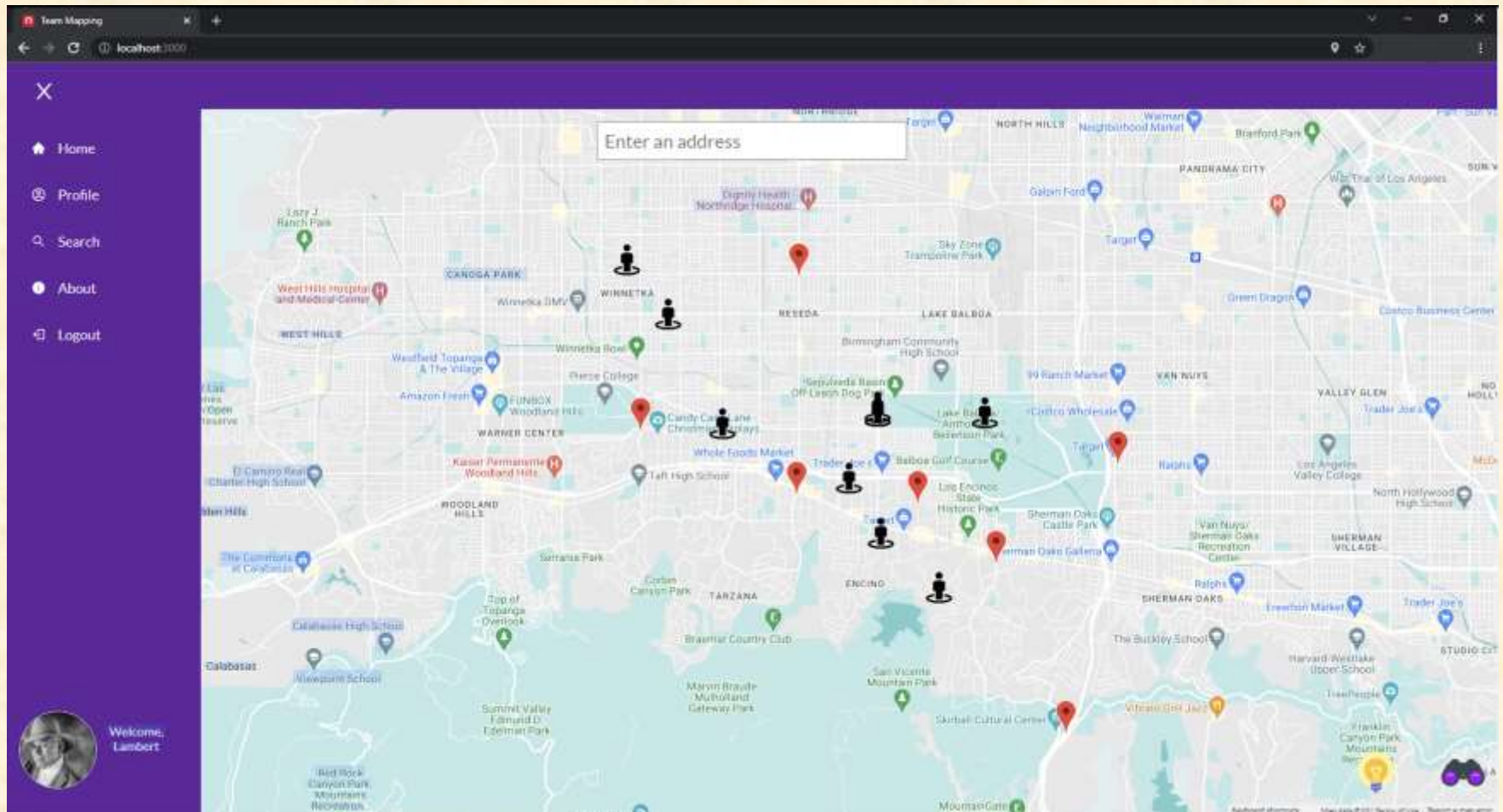
- Bridge Communication Gap Between Remote Employees
- Collaboration & Community Focused
- Searchable Map Showing Other Employees
- Leveraging SiftAPI for User Profiles
- User Created Events for Work Meet-ups and Social Gatherings



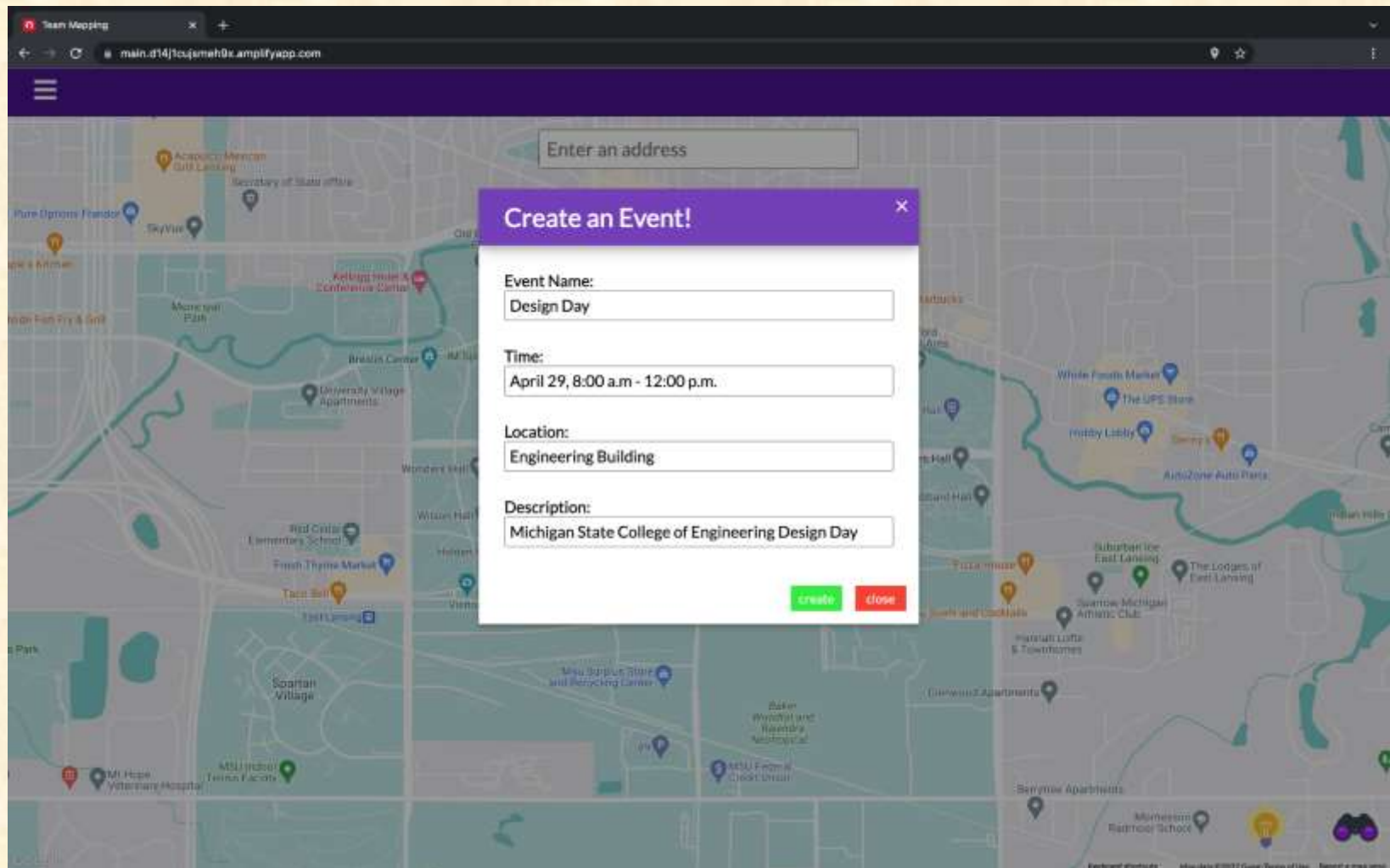
System Architecture



Homepage Map With Users and Events



Creating an Event



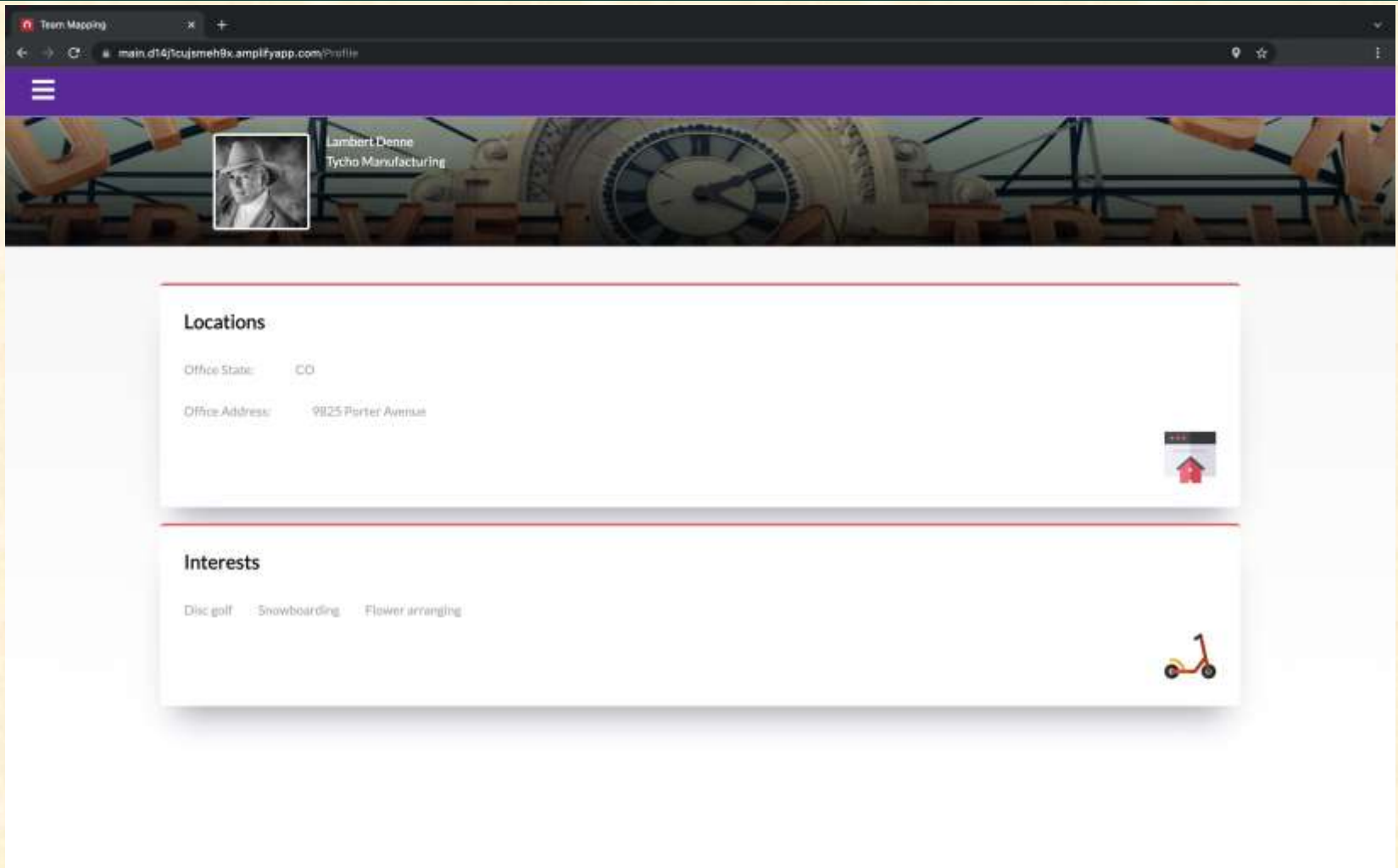
The screenshot shows a web browser window with a purple header bar. The address bar displays 'main.d141scjgmeh0x.amplifyapp.com'. Below the header is a map of East Lansing, Michigan. A modal window titled 'Create an Event!' is overlaid on the map. The modal contains the following fields:

- Event Name:** Design Day
- Time:** April 29, 8:00 a.m - 12:00 p.m.
- Location:** Engineering Building
- Description:** Michigan State College of Engineering Design Day

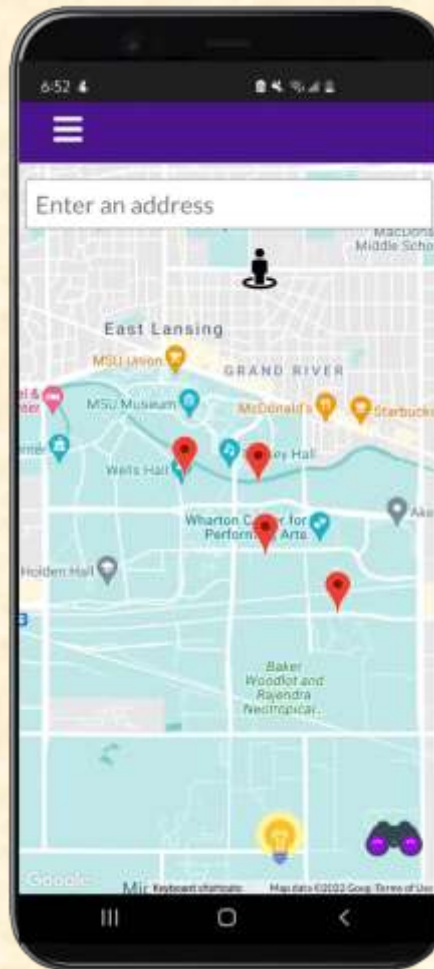
At the bottom right of the modal are two buttons: a green 'create' button and a red 'close' button. The background map shows various landmarks and streets, with a search bar at the top center of the map area.



Profile Screen



Mobile Web App

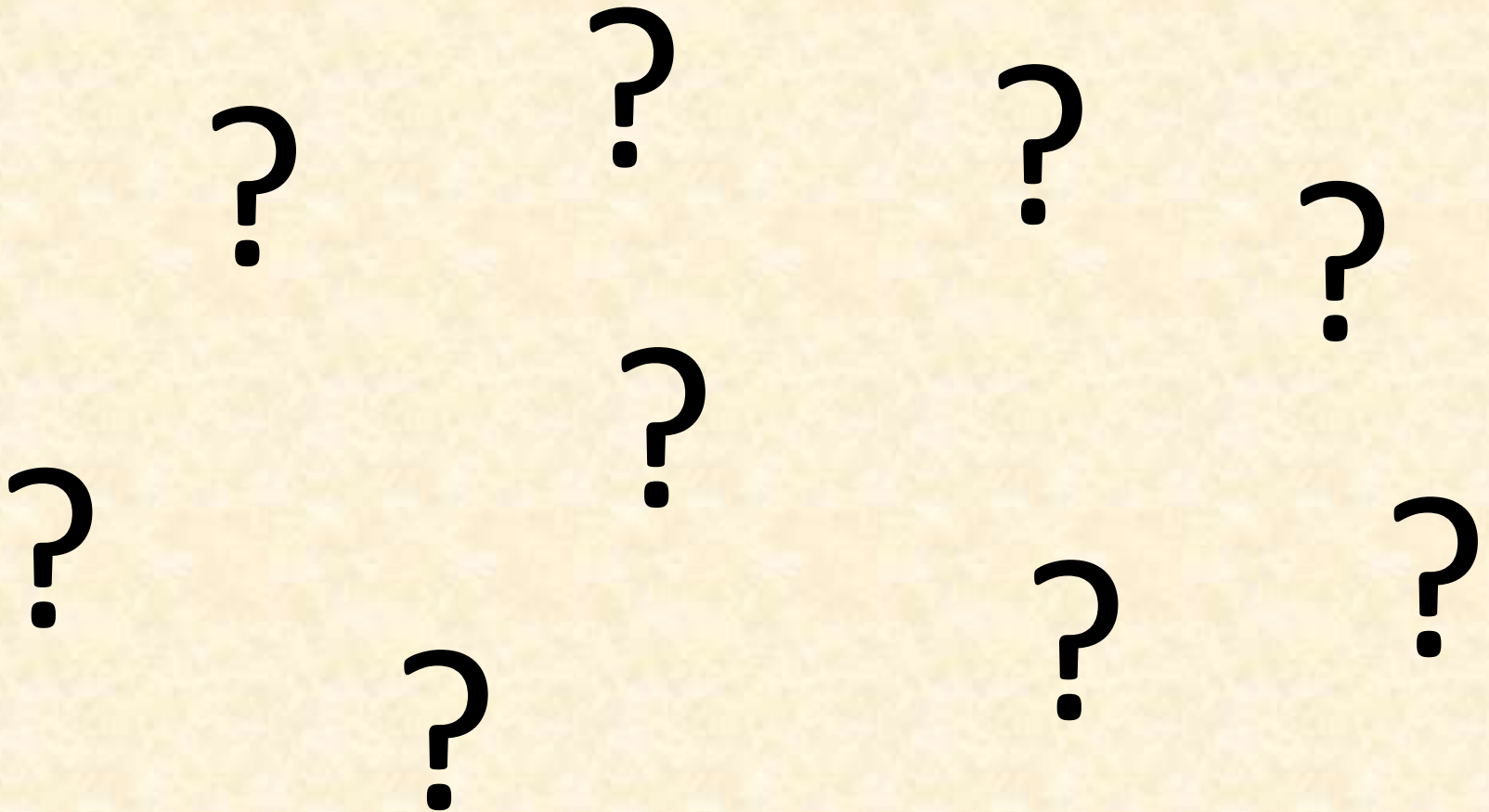


What's left to do?

- Updating an Actual User's Location Within the Database (Currently Dummy Data)
- Filtering the Map with SiftAPI
 - Ex. Interests, company, locations.
- More Event Functionality
 - Better event marker info boxes and descriptions.
 - Create group chat for events.
- Option to not Show Precise Location
- Only Show Events and Users Nearby/Requested
- More Backend Endpoints (DELETE and POST)
- Implement Unit Testing



Questions?



Mobile Demo Video

