



Beta Presentation Rumble Test Suite

The Capstone Experience

Team Vectorform

Andreas Frame

Anna Quenon

Hyeungsuk Kim

Reis Wiedemann



*From Students...
...to Professionals*

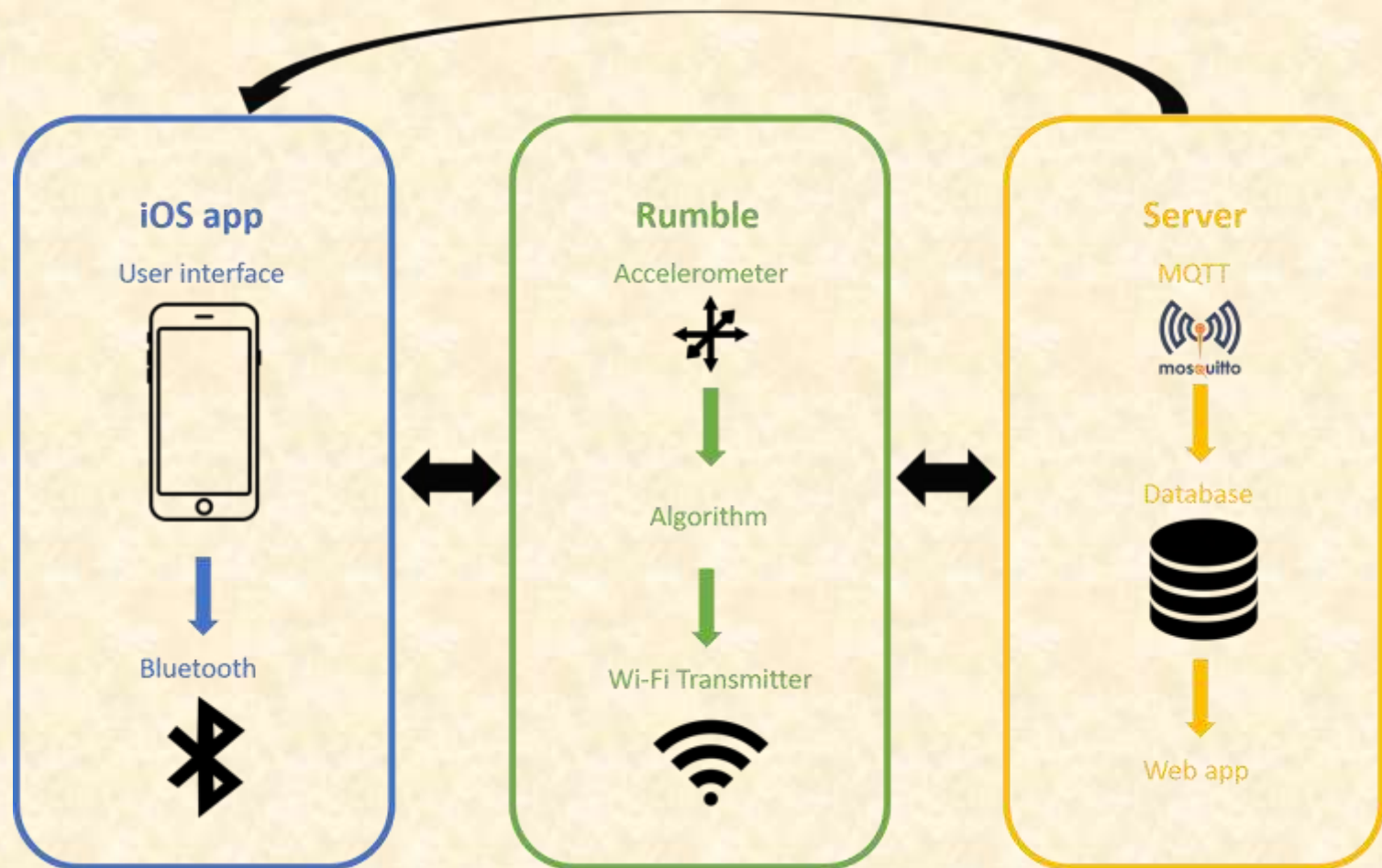
Department of Computer Science and Engineering
Michigan State University
Spring 2020

Project Overview

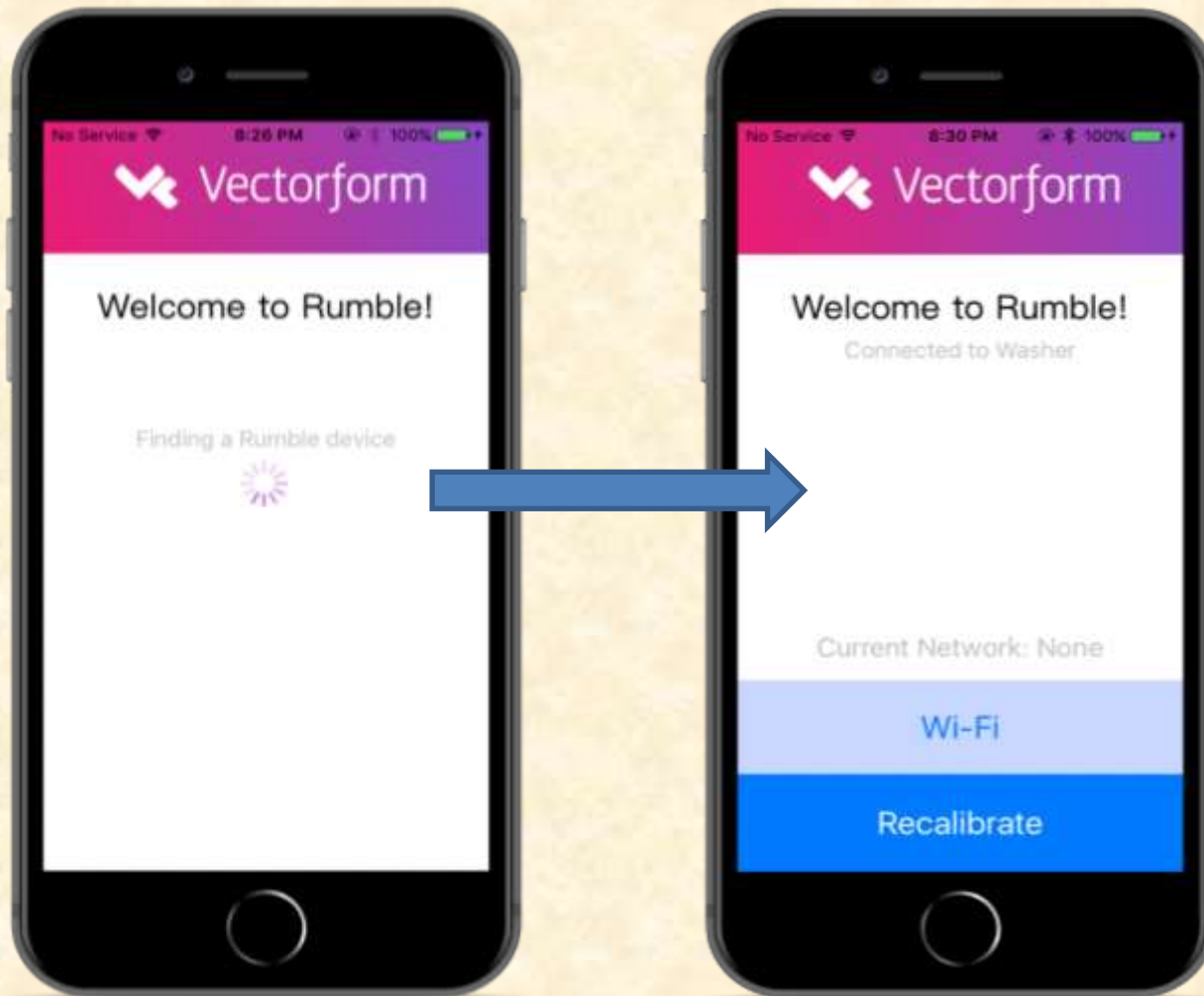
- Rumble device tracks a wash cycle
 - Custom algorithm
- iOS app
 - Connects the Rumble device to Wi-Fi
 - Recalibrates Rumble device
 - Allows for push notifications
- Web app
 - Displays data from each wash cycle
 - Live data



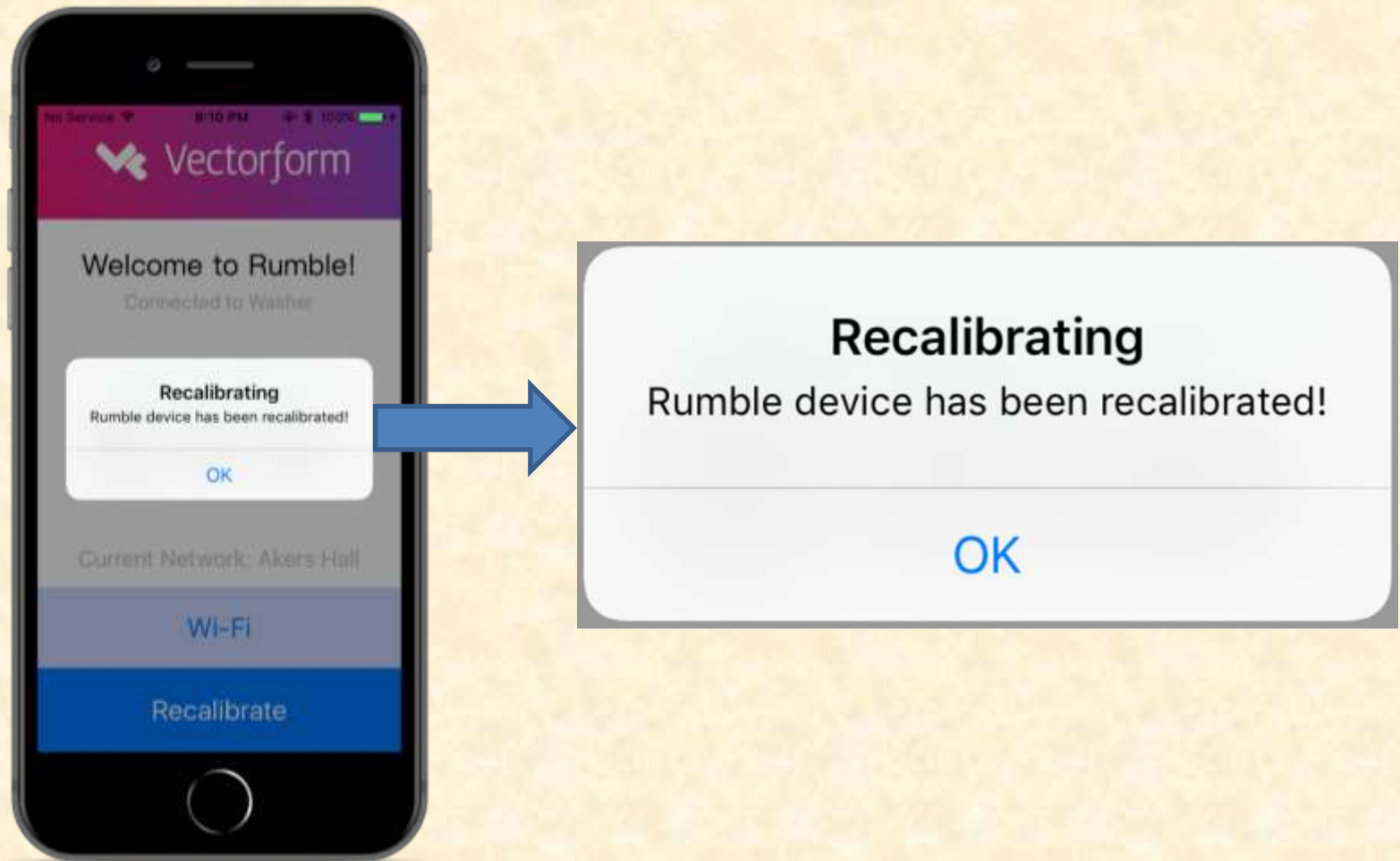
System Architecture



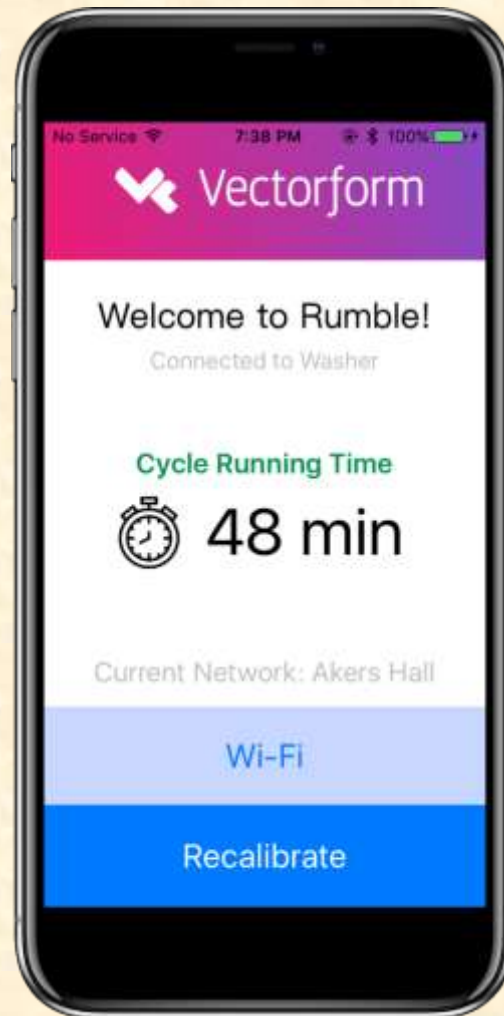
Finding Rumble Device



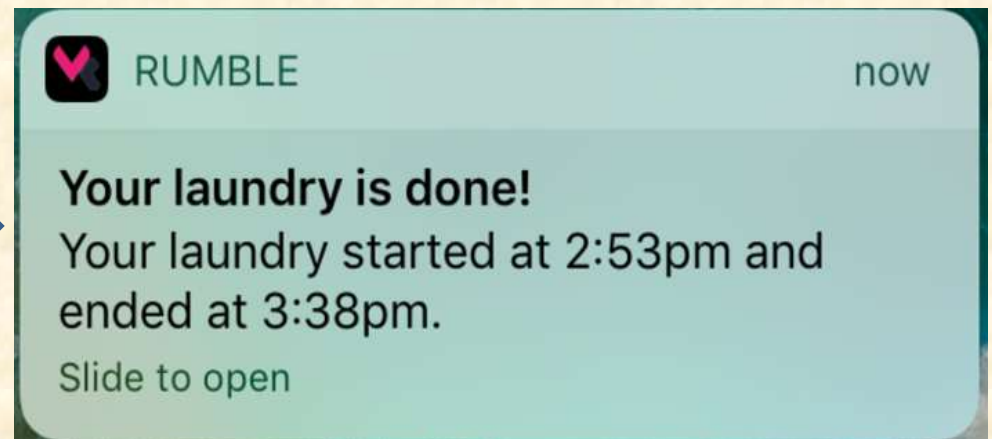
Recalibration Screen



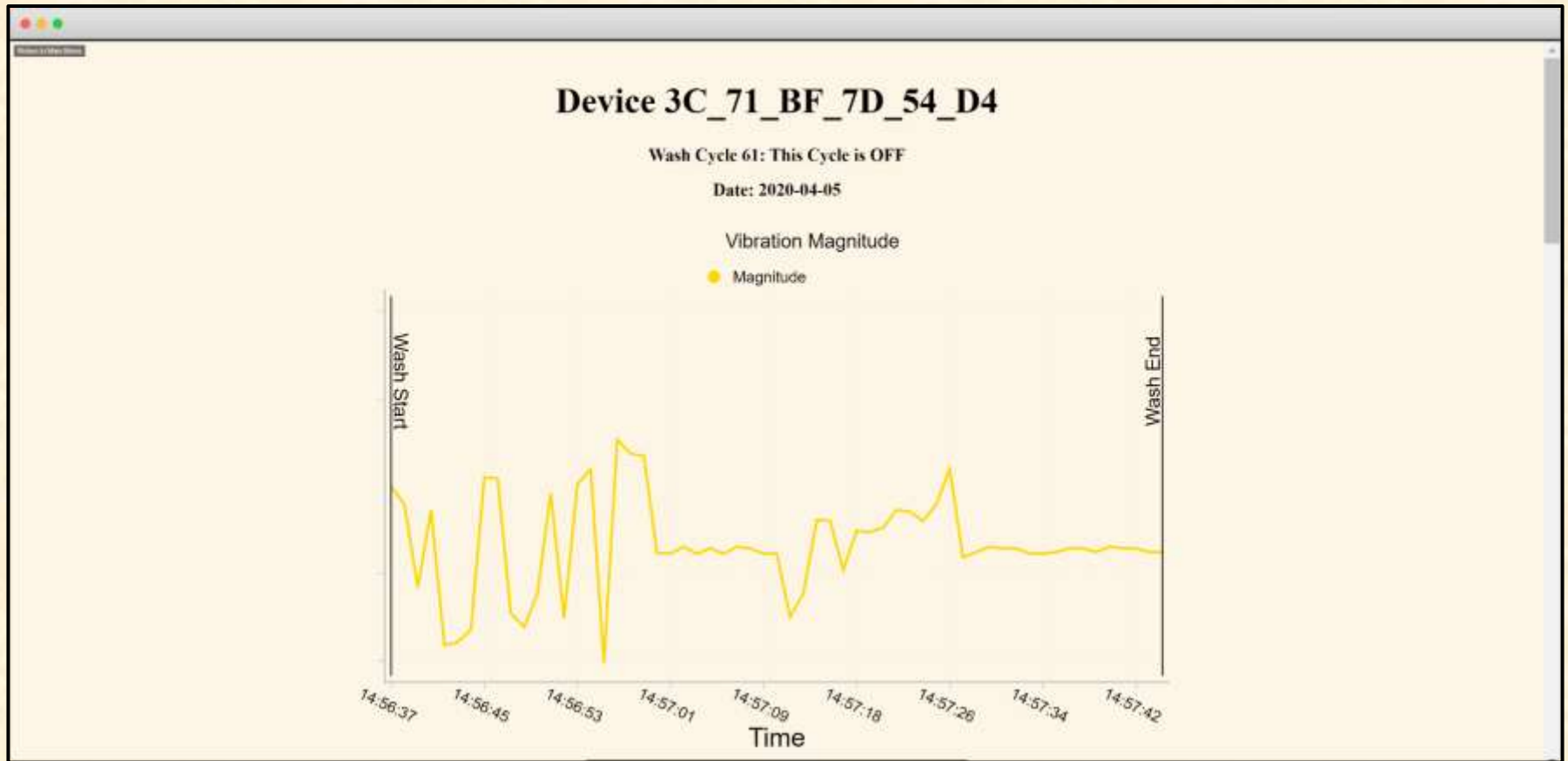
Wash Running



Push Notification



Web application (pt.1)



Web application (pt.2)



The screenshot shows a web application window. At the top, there is a calendar for April 2020. Below the calendar is a table with three columns: 'Start Time', 'End Time', and 'Start Date'. The table contains eight rows of data, each representing a 'Wash' event. The 'Start Time' and 'End Time' columns show times in HH:MM:SS format, and the 'Start Date' column shows dates in YYYY-MM-DD format.

	Start Time	End Time	Start Date
Wash: 47	14:29:44	14:30:12	2020-04-05
Wash: 48	14:31:09	14:32:15	2020-04-05
Wash: 49	14:33:24	14:33:47	2020-04-05
Wash: 50	14:34:27	14:34:27	2020-04-05
Wash: 51	14:35:30	14:35:59	2020-04-05
Wash: 52	14:36:49	14:37:12	2020-04-05
Wash: 53	14:39:32	14:39:55	2020-04-05
Wash: 54	14:41:18	14:41:18	2020-04-05



What's left to do?

- Continue to train/improve algorithm
- Small adjustments to website for improved user experience

Questions?

?

?

?

?

?

?

?

?

?

