

MICHIGAN STATE
UNIVERSITY

Project Plan

ERP Air Force: Drone Elephant Recognition and Tracking

The Capstone Experience

Team Evolution

Tyler Lawson

Rei Doko

Jeremy Arsenault

Nic Wiggins

Kunyu Chen

Department of Computer Science and Engineering
Michigan State University



From Students...
...to Professionals

Fall 2019

Functional Specifications

- Problem: Preserve and protect South African wild Elephants
 - Current efforts are expensive and labor intensive
- Solution: Automate tracking and identification of Elephants
 - Identify moments in video where Elephants are in the frame
 - Inform rangers where to search for Elephants

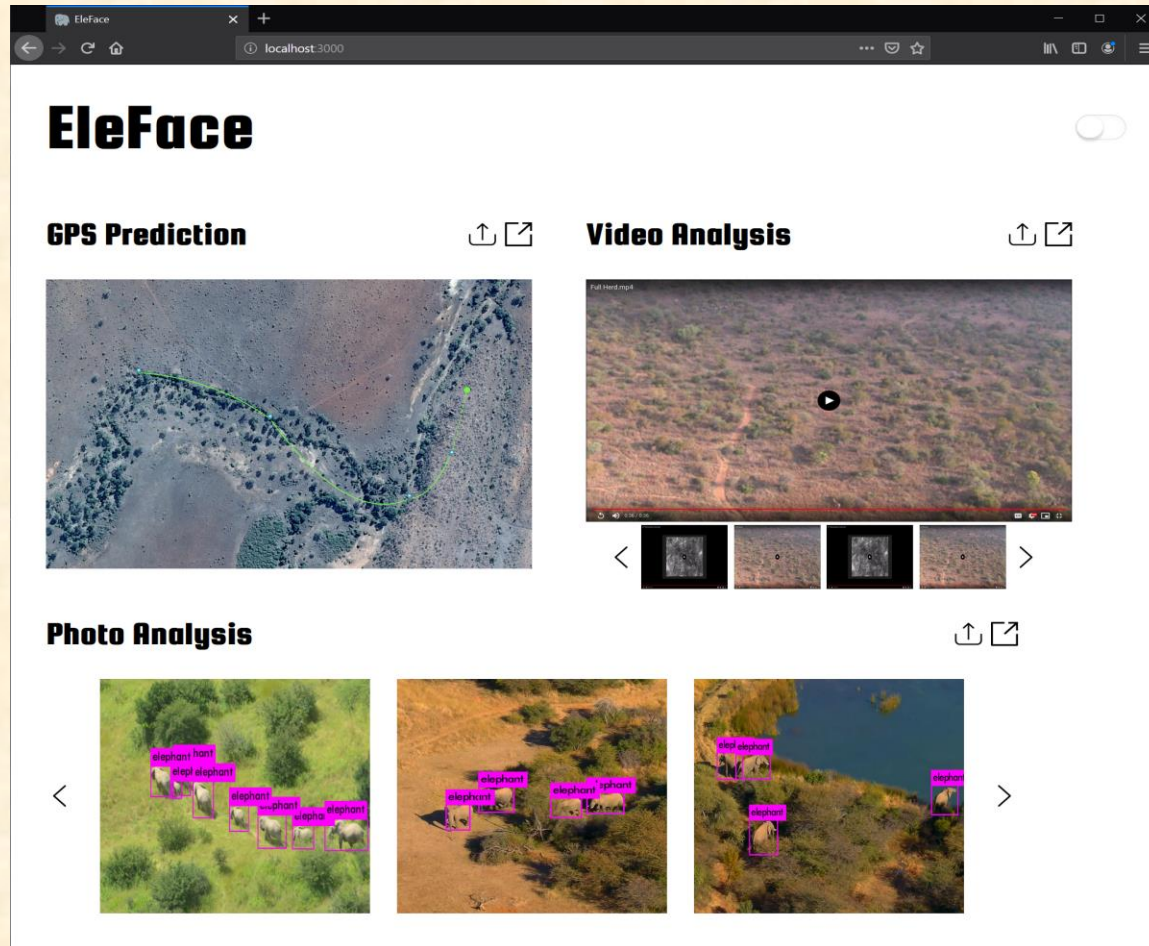


Design Specifications

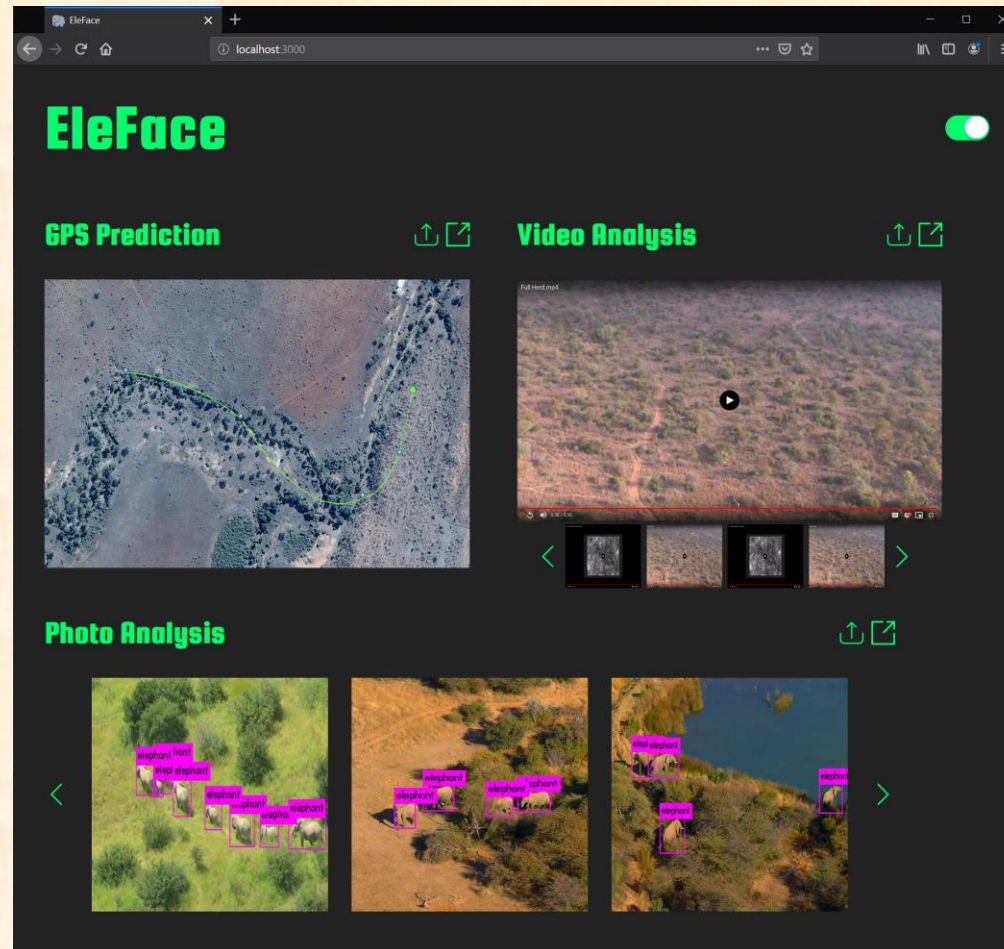
- Create machine learning models for detection, auto-identification, and location prediction of elephants
- Build an API for high level access to each model
- Build a dashboard for user-friendly interaction with the API



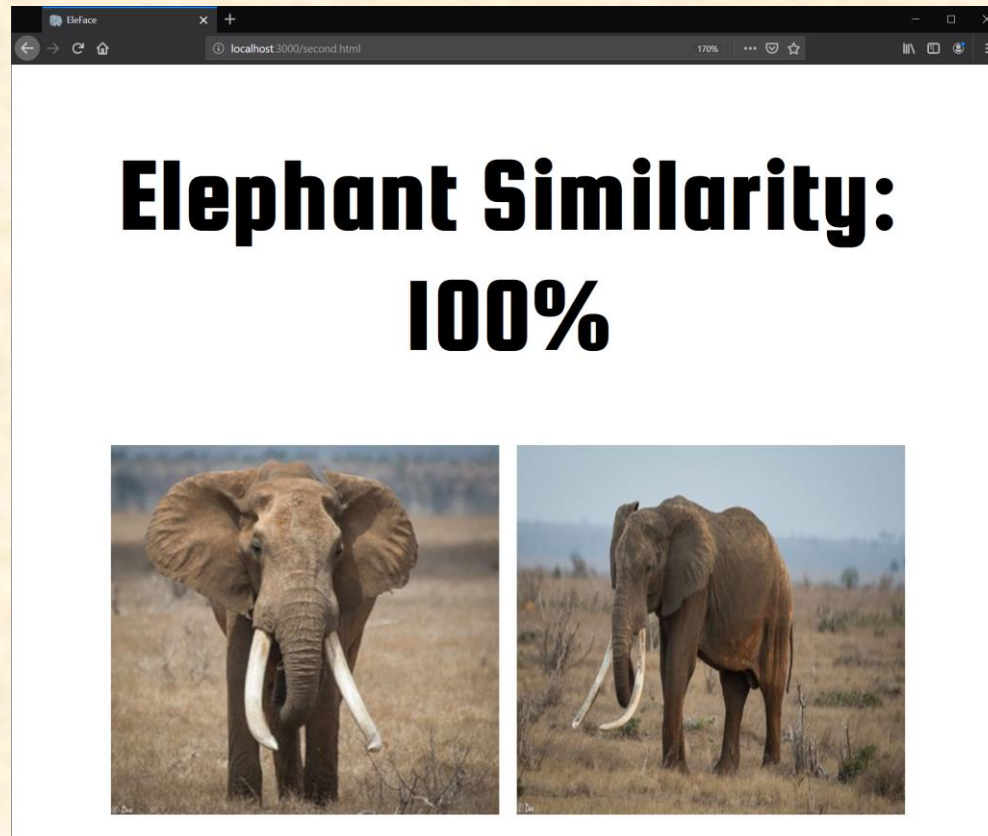
Screen Mockup: Dashboard Home (Light Theme)



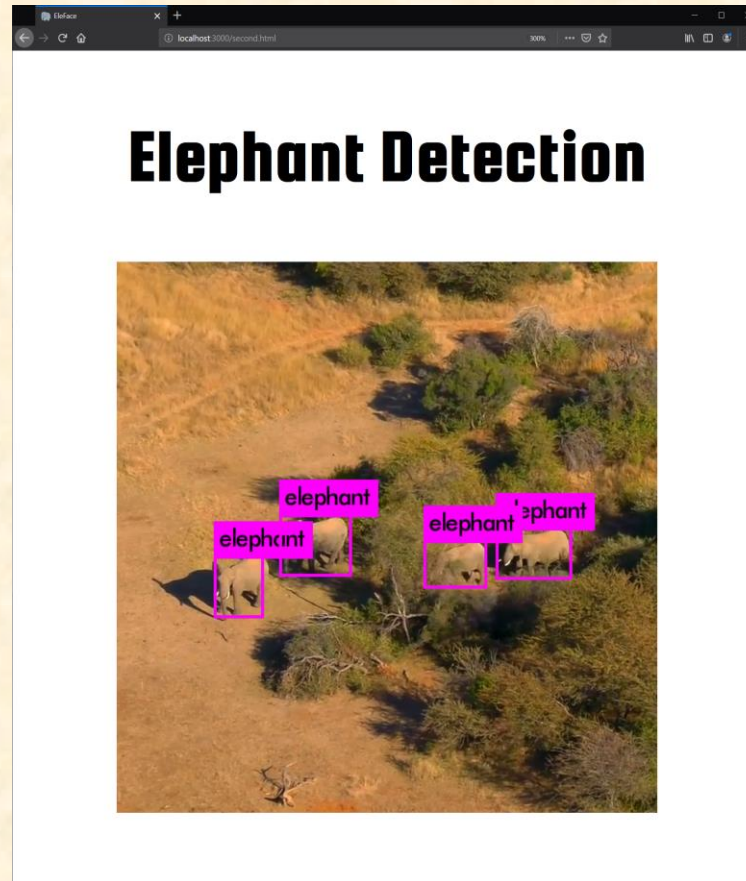
Screen Mockup: Dashboard Home (dark theme)



Screen Mockup: Elephant Similarity



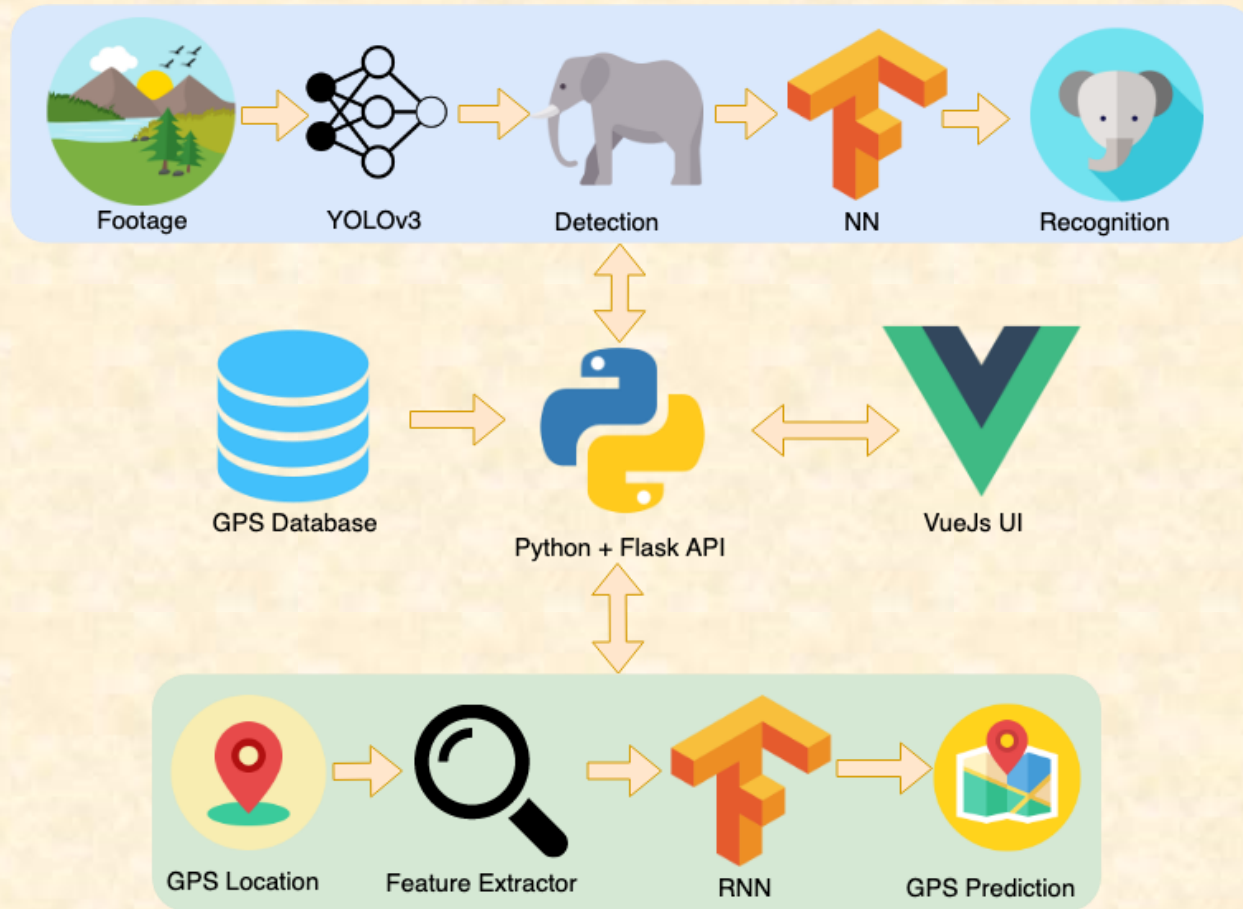
Screen Mockup: Detection



Technical Specifications

- Detection
 - YOLOv3
- Identification
 - Multi-layered neural network for developing a similarity metric for Elephants
- Tracking
 - Two separate RNNs for longitude and latitude
 - Trained with historical GPS, elevation, and vegetation data

System Architecture



System Components

- Hardware Platforms
 - HPCC for training models
 - Project run and hosted locally
- Software Platforms / Technologies
 - UI: Vuejs
 - API: Python Flask
 - Machine Learning: YOLOv3 & Tensorflow

Risks

- Drone Footage not fit for model
 - Resolution limits ability to label and detect elephants
 - Request closer drone footage
- Lack of Verification Data
 - Unable to verify an identified elephant is truly the same elephant
 - Use famous elephants to develop similarity metrics
- Quantity of GPS data
 - Need GPS data from a long period of time to accurately predict movement
 - Use data from other sources
- Elephants Indistinguishable from above
 - Elephant image recognition is not necessarily possible from a drone
 - Focus more on trail cam footage and GPS prediction



Questions?

?

?

?

?

?

?

?

?

?