

**CHRYSLER**

## **Performance Feedback System Dashboard**

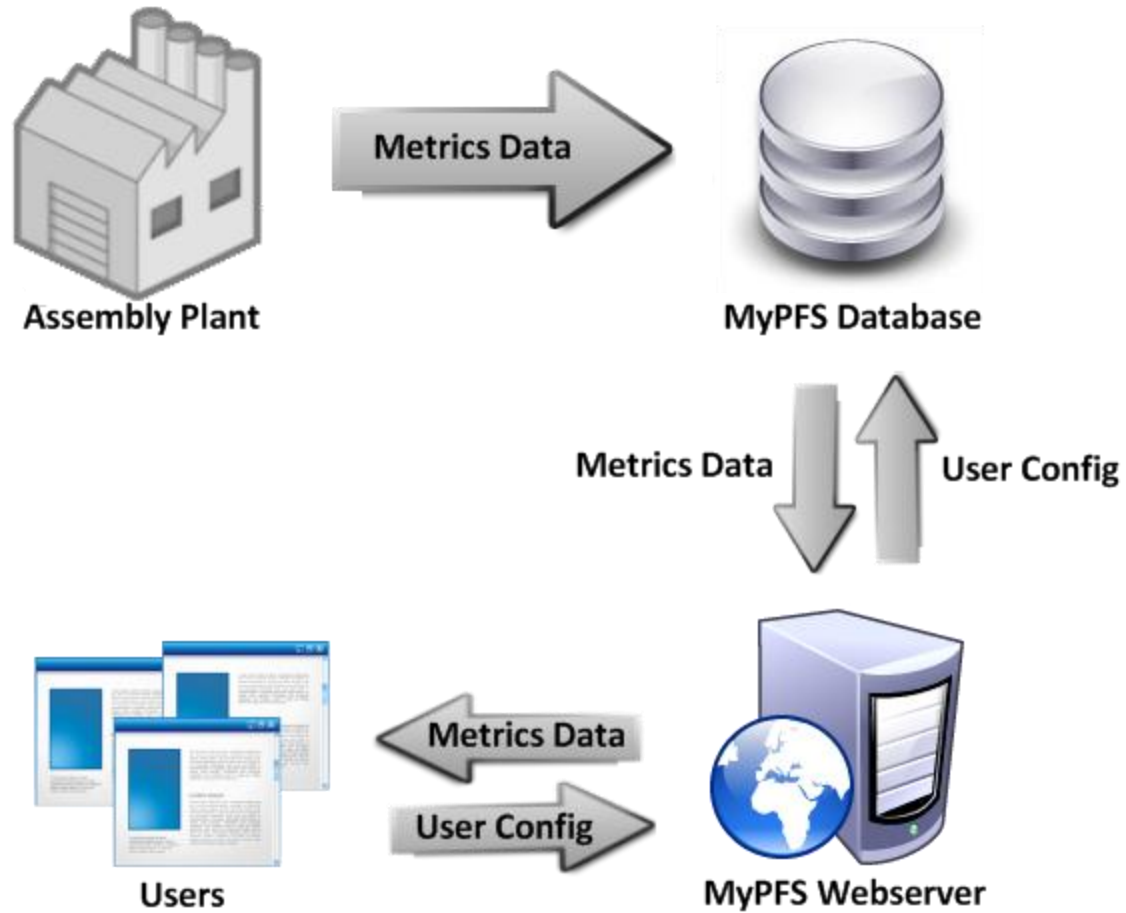
**Meshal Alsahli  
Taylor Marshall  
Julian Simioni  
David Ackerman**

10/15/2008

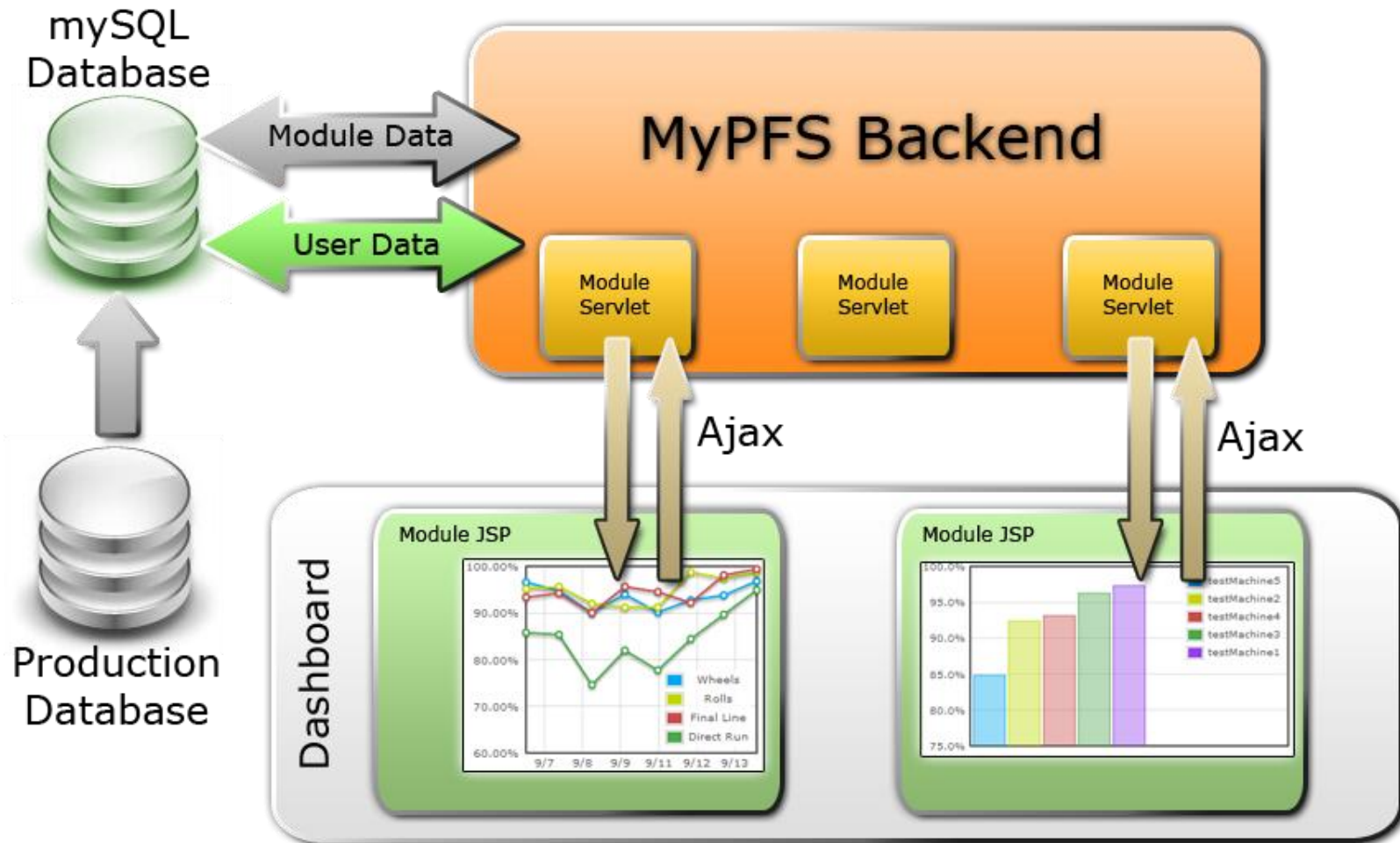
# Performance Feedback System

- **Current System**
  - Collects and analyzes vehicle quality metrics
  - Allows for manual report generation
- **Problems**
  - User must manually request each report
  - Discovering upcoming problems difficult
- **Solution – MyPFS Dashboard**
  - Provides feedback “at a glance”
  - Displays a relevant overview of data
  - User-customizable graphs, charts, and tables
  - Continuous updating with live data

# Architecture



# Architecture



# Demo

## *PFS Anonymous Dashboard*

```

C:\Windows\system32\cmd.exe
plant: Newark, problem: R/S DRS BLACKOUT TAPE FIT/FIN/AL
date: 2008-10-16
id: 88456, count: 0
oldcount: 3
affected rows:0 <UPDATE topproblems SET count=? WHERE pl
?)

plant: Newark, problem: BACKLITE GRID I/O
date: 2008-10-16
id: 23215, count: 0
oldcount: 1
affected rows:0 <UPDATE topproblems SET count=? WHERE pl
?)

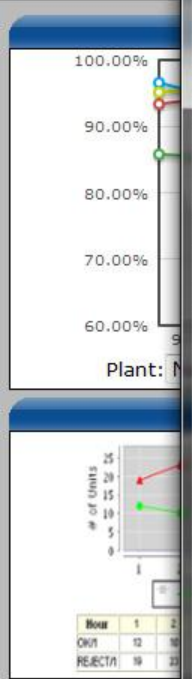
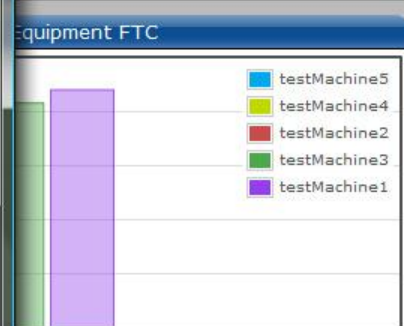
plant: Newark, problem: QBUY VALIDATION ELECTRICAL TEST
date: 2008-10-16
id: 11215, count: 1
oldcount: 1
affected rows:1 <UPDATE topproblems SET count=? WHERE pl
?)

plant: Newark, problem: EUAP TEMP AT END OF COOLDOWN
date: 2008-10-16
id: 887, count: 0
oldcount: 3
affected rows:0 <UPDATE topproblems SET count=? WHERE pl
?)

plant: Newark, problem: READ ENGINE FAULTS
date: 2008-10-16
id: 216, count: 0
oldcount: 2
affected rows:0 <UPDATE topproblems SET count=? WHERE pl
?)

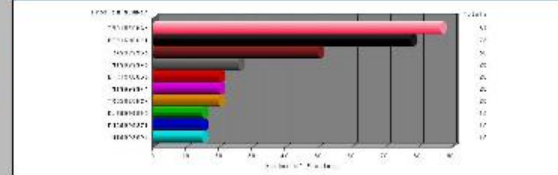
plant: Newark, problem: QBUY TRANS TOP-OFF LEVEL<ROLLS B
date: 2008-10-16
id: 87711, count: 1
oldcount: 3
affected rows:1 <UPDATE topproblems SET count=? WHERE pl
?)

plant: Newark, problem: CGN STORED FAULT READ
date: 2008-10-16
id: 231, count: 1
oldcount: 2
affected rows:1 <UPDATE topproblems SET count=? WHERE pl
    
```

**Plant Summary**

**Equipment FTC**

**Top Problems**

Problem Name	ID	Count
L/S DRS BLACKOUT TAPE ALIGN/FIT /FINISH(OPTION)/ISD	221	4
L/S 'A' POST TRIM TO HEADLINER FIT/FINISH	5645	4
QBUY TRANS TOP-OFF LEVEL(ROLLS BLOCK)	87711	4

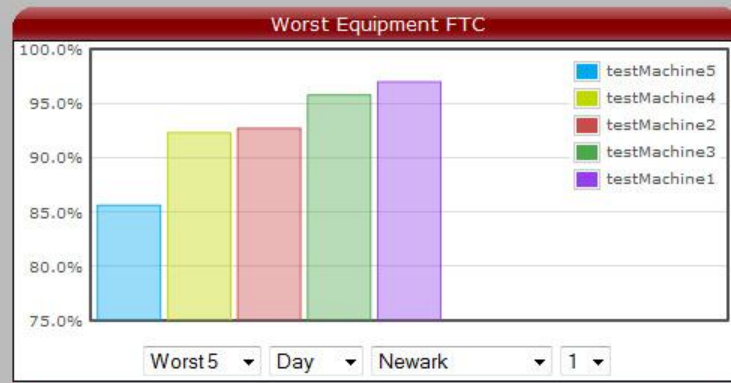
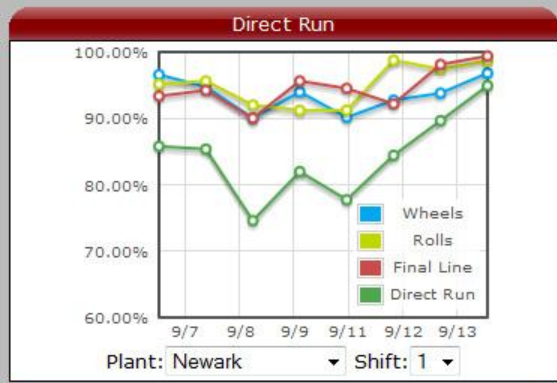
Newark 3

**Boughtoff SDRL**

**Leaving Zone**

Description	Count	Checklist
ATION SYSTEM	2	O1879L
(026AA)IN VEHICLE	11	O1879L
DIESEL SHIFTER ROUTED	2	O1879L
ODULE PART SCAN	12	O1880P
Y REQ'D		
BRAKES	13	TESTING

1 Shift: 1 Zone: 1 Rows:

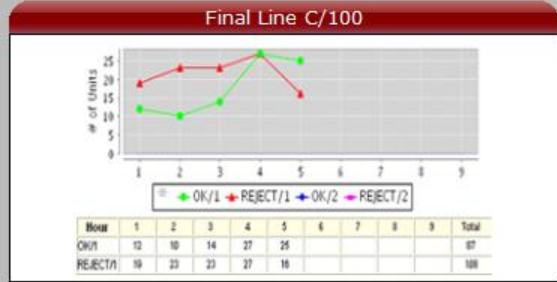




### Top Problems

Problem Name	ID	Count
L/S DRS BLACKOUT TAPE ALIGN/FIT /FINISH(OPTION)/ISD	221	4
L/S 'A' POST TRIM TO HEADLINER FIT/FINISH	5645	4
QBUY TRANS TOP-OFF LEVEL(ROLLS BLOCK)	87711	4

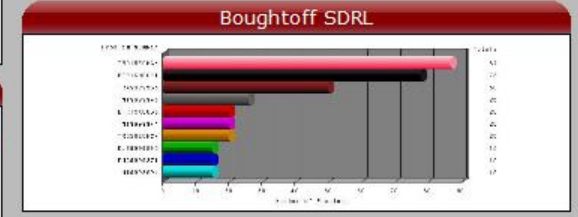
Newark | 3



### Problems Leaving Zone

Problem No.	Description	Count	Checklist
XCDD23WDE4	QBUY NAVIGATION SYSTEM	2	O1879L
ELE9997781	QBUY SRT4 AMP(026AA)IN VEHICLE	11	O1879L
EER4XX234Z	QBUY MANUAL DIESEL SHIFTER CABLE ROUTED	2	O1879L
ECDGPECSCN	QBUY GPEC MODULE PART SCAN VERIFY REQ'D	12	O1880P
DDR4XX234Z	QBUY BRAKES	13	TESTING

Plant: Sterling Heights | Dept: 1 | Shift: 1 | Zone: 1 | Rows:



# What's Next?

- **User profiles**
  - Module selection and location saved
  - Settings for modules saved
- **Additional modules**
  - 6 more modules scheduled for beta
- **Improve cross-browser compatibility**



# Questions?