

MICHIGAN STATE

U N I V E R S I T Y

Beta Presentation

PETT: Predix-Enabled Toy Train

The Capstone Experience

Team GE

Lama Aboubakr

Henok Alemayehu

Lucas Reynolds

Joshua Schwallier

Matt Sopata

Department of Computer Science and Engineering

Michigan State University

Spring 2017



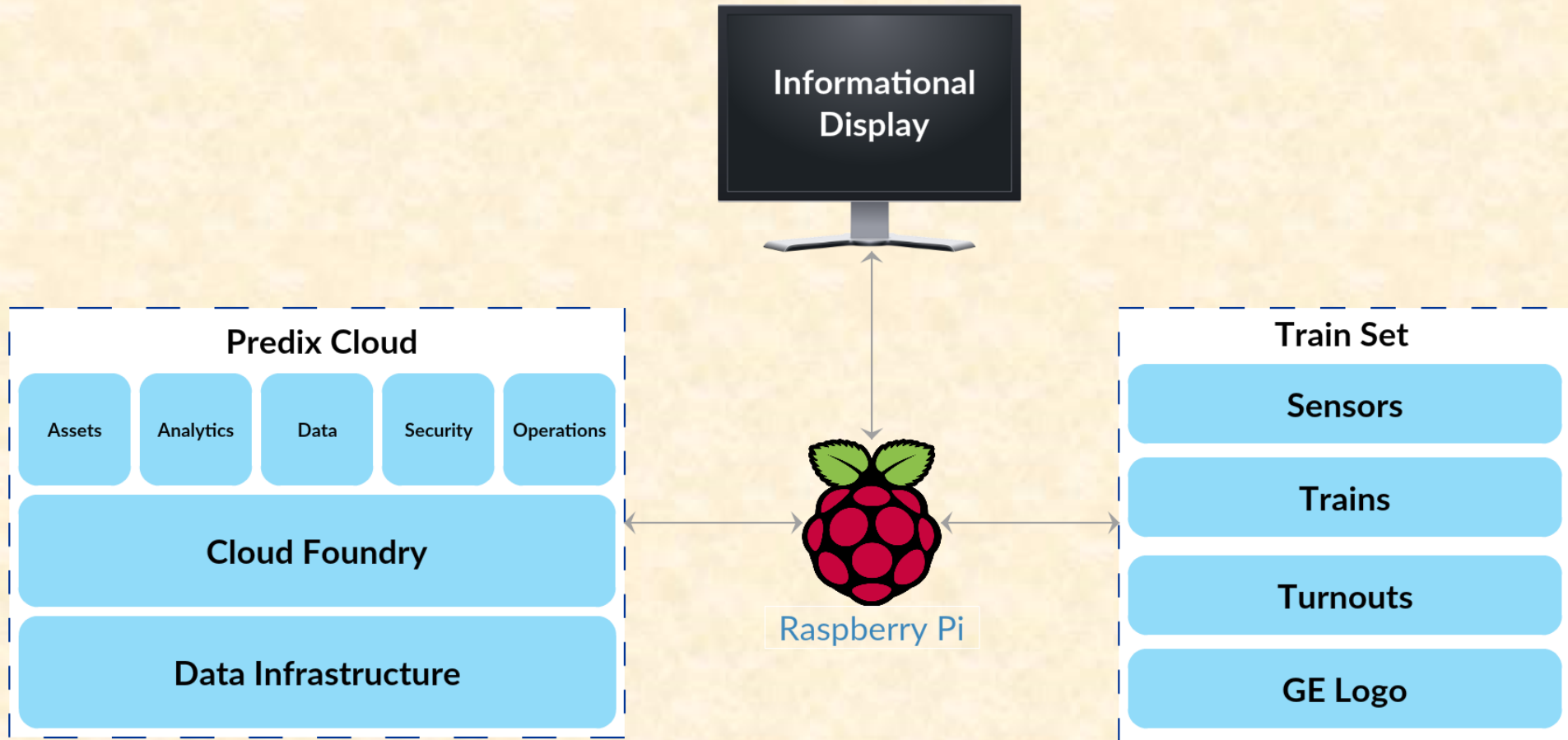
*From Students...
...to Professionals*

Project Overview

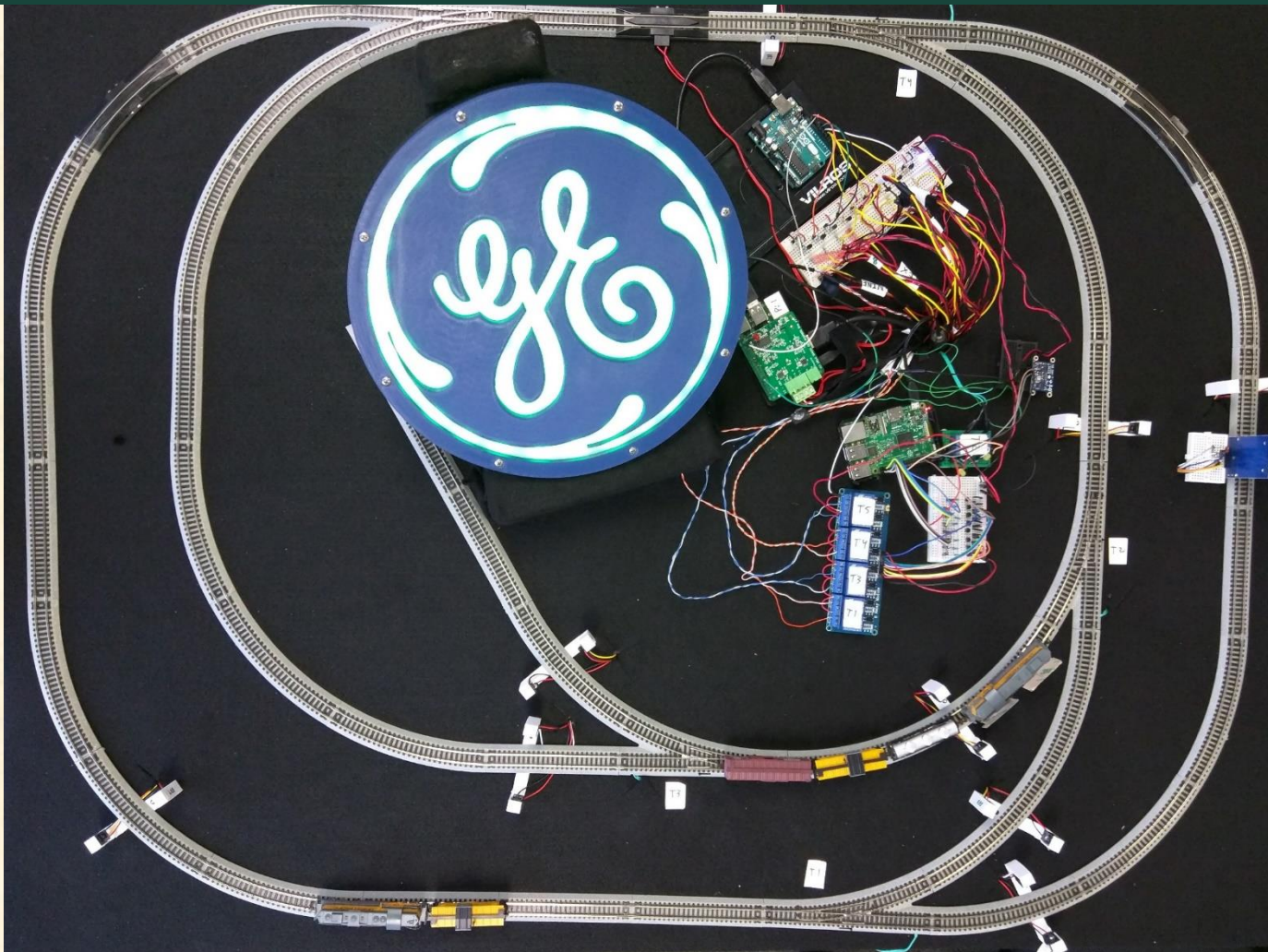
- Demonstrate the capabilities and services of Predix with the Toy Train
 - Receive, analyze, and monitor data collected from the train and sensors along the track using Predix
 - Provide an interactive formative to showcase results
- Deliver a product to be showcased inside GE's Digital Hub and at fairs



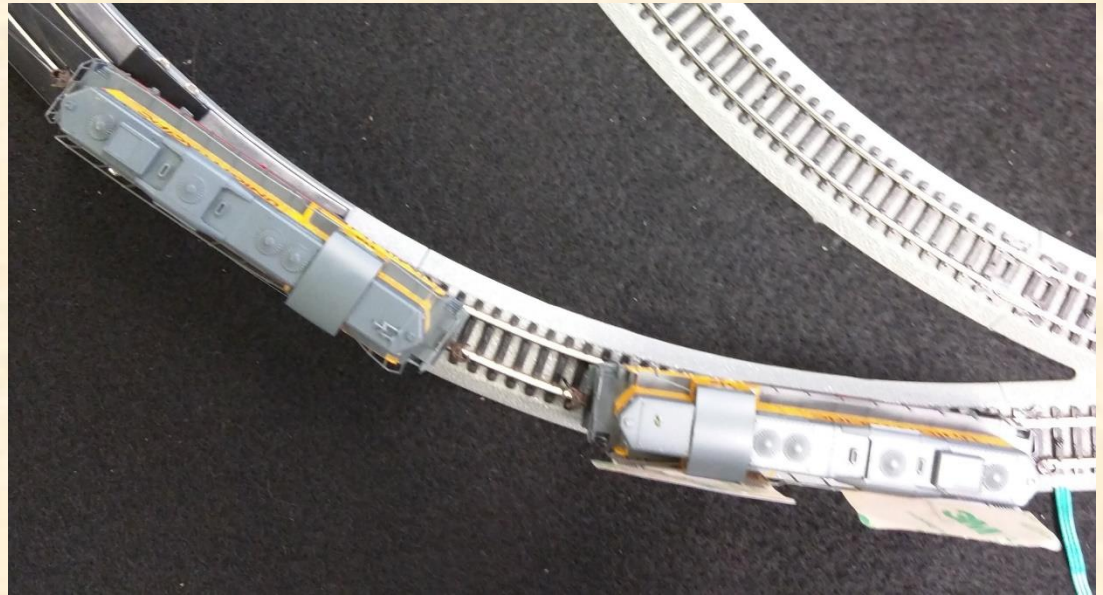
System Architecture



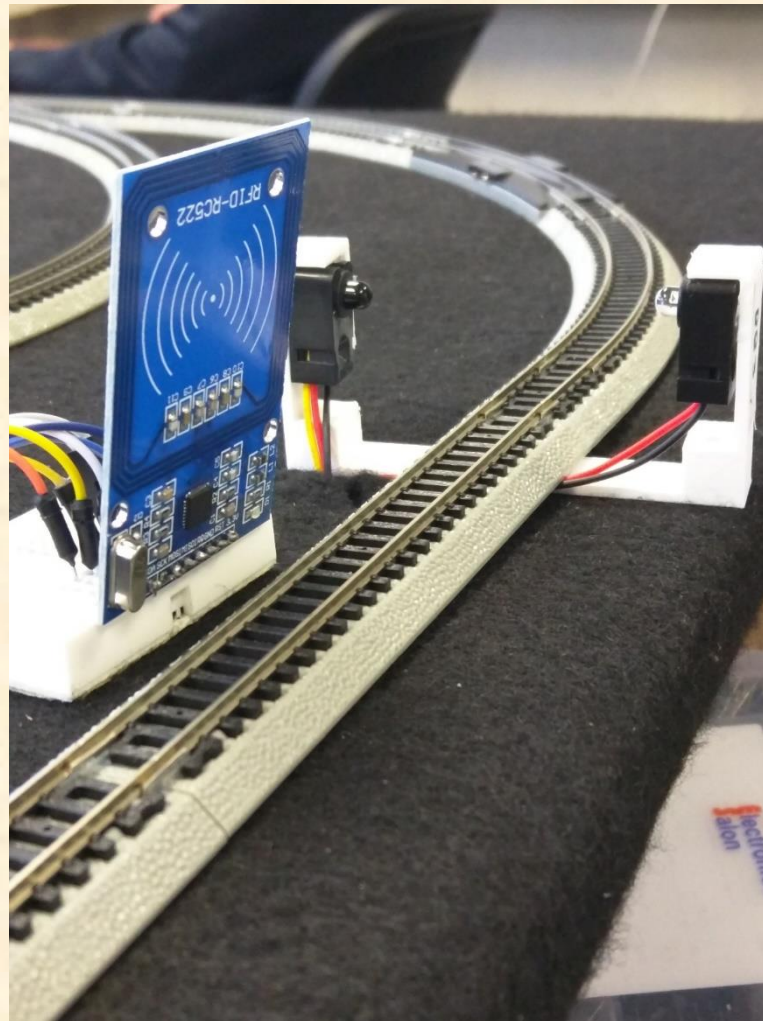
Train Layout



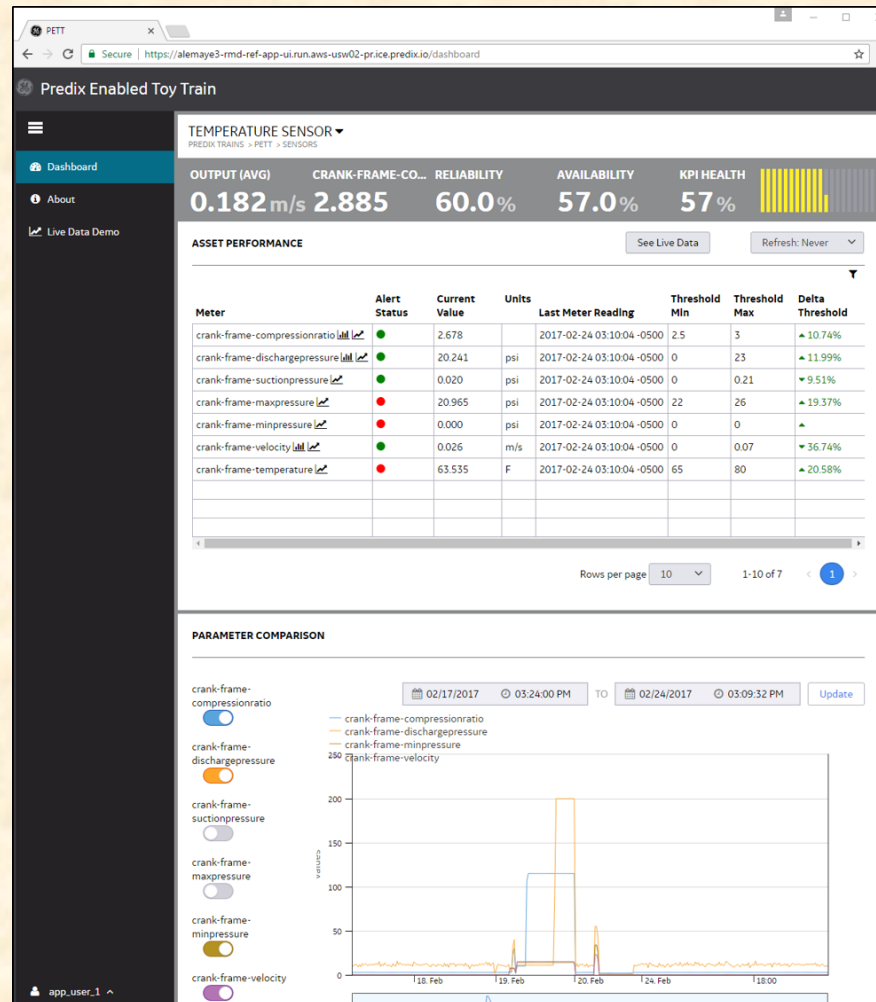
Crash Scenarios



RFID and Beam Breakers



Predix Dashboard



What's left to do?

- Finalize Predix Dashboard
- Finalize Collision Testing and Implementation
- Project Video



Questions?

?

?

?

?

?

?

?

?

?

